

Modular Circulations Desks

General Specifications - Circulation Desks

Modular Case System: Each case module is fully assembled, allowing for simple field assembly of the complete circulation desk as well as for easy reconfiguration, if necessary. Cases connect with male/female threaded metal connectors.

Top: Tops are 1-1/4" thick, three ply engineered wood construction with .050" High pressure laminate, HPL, and a phenolic backer sheet. The patron side is edged with 5/16" x 1-1/4" solid red oak (with the exception on the Malibu and Keystone design have 1-5/8") with a 1/4" radius top and bottom. The edges and back side of the top are edged with 1/8" solid red oak.

Case Construction: Circulation desk modules are constructed of 3/4" thick, three ply particleboard with plain sliced "A" grade oak veneer. All modules, except Malibu style, utilize a continuous front design (sides do not penetrate), with a 4" High recessed toe. Cabinets are assembled using glue and dowel joinery. Note: One Terminating End Panel is required for each exposed end of a complete desk assembly.

Adjustable Shelves: Adjustable shelves are 3/4" thick three ply particleboard plywood with "A" grade oak veneer faces. The exposed edges are edged with 1/8" solid red oak. Shelves are adjustable on 32mm increments.

Drawers: Drawers are constructed of 1/2" nine ply baltic birch plywood. Drawers have 3/4" thick fronts with "A" grade oak veneer. Box drawers have 100 lb. full extension slides, file drawers have 100 lb. full extension slides.

Doors: Doors are constructed of 3/4" thick, three ply particleboard with plain sliced "A" grade oak veneer faces and edged on all sides with 1/8" solid red oak. Door hardware includes concealed hinges, fully adjustable in all 3 axes, and wire pulls.

Continuous Top Construction: Tops may be specified as continuous.

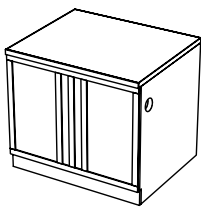
Locks: Units may be specified with doors and or drawers locking, keyed random or alike.

Design Lines: mediatechnologies® offers seven design lines of circulation desk modules, all using the general construction specifications above.

To specify a design line you must include a letter indicator: No letter indicator will specify our standard Bookmark design.

M-Metro **L**-Lexington **H**-Heritage **MB**-Malibu
CL-Charleston **KS**-Keystone

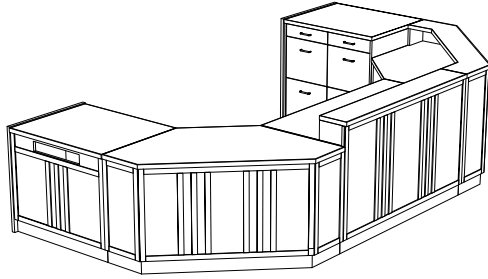
Please see below for design descriptions



Heritage: a mission style design line, also using solid oak details applied to the patron side of most modular units. Model Number example for Heritage Desk unit; MCD-H-36D-29

Heritage

Circulation Desks



Desk Units				
36" Wide	Model Number	Description	Wgt.	List Price
	MCD-H-36D-29	Desk Unit, 36"W X 30"D X 29" H	120	\$2,197
	MCD-H-36D-32	Desk Unit, 36"W X 30"D X 32" H	126	\$2,197
	MCD-H-36D-39	Desk Unit, 36"W X 30"D X 39" H	141	\$2,335
	MCD-H-36D-32-ADJ	Desk Unit, 36"W X 30"D X ADJ. H	126	\$2,392
48" Wide	Model Number	Description	Wgt.	List Price
	MCD-H-48D-29	Desk Unit, 48"W X 30"D X 29" H	131	\$2,928
	MCD-H-48D-32	Desk Unit, 48"W X 30"D X 32" H	138	\$2,928
	MCD-H-48D-39	Desk Unit, 48"W X 30"D X 39" H	153	\$3,108
	MCD-H-48D-32-ADJ	Desk Unit, 48"W X 30"D X ADJ. H	138	\$3,191
72" Wide	Model Number	Description	Wgt.	List Price
	MCD-H-72D-29	Desk Unit, 72"W X 30"D X 29" H	206	\$4,465
	MCD-H-72D-32	Desk Unit, 72"W X 30"D X 32" H	212	\$4,465
	MCD-H-72D-39	Desk Unit, 72"W X 30"D X 39" H	230	\$4,488
	MCD-H-72D-32-ADJ	Desk Unit, 72"W X 30"D X ADJ. H	212	\$4,867
Book Return	Model Number	Description	Wgt.	List Price
	MCD-H-36BR-29	Book Return, 36"W X 30"D X 29" H	118	\$2,353
	MCD-H-36BR-32	Book Return, 36"W X 30"D X 32" H	124	\$2,353
	MCD-H-36BR-39	Book Return, 36"W X 30"D X 39" H	139	\$2,496
Descending Platform Book Truck	Model Number	Description	Wgt.	List Price
	MCD-DBT-1824-21	Depressible Platform Book Truck, 18"D x 24.25"W x 21"H, For curved 29"H Book Return Units and Nomad Book Return	135	\$2,555
	MCD-DBT-1824-24	Depressible Platform Book Truck, 18"D x 24.25"W x 24"H, For Curved 32"-39"H Book Return Units	135	\$2,555
	MCD-DBT-2424-21	Depressible Platform Book Truck, 23.625"D x 24.25"W x 21"H, For 29"H Book Return Units with Extended Chutes and 32"H Keystone and Malibu Book Returns	137	\$2,555
	MCD-DBT-2424-24	Depressible Platform Book Truck, 23.625"D x 24.25"W x 24"H, For 32" and #("H Book Return Units	137	\$2,555
Top Surface Slot Book Return Module with Drawer and Shelf Storage	Model Number	Description	Wgt.	List Price
	MCD-H-36SBR-TOP-29	Book Return w Top Slot, 36"W X 30"D X 29" H	200	\$3,399
	MCD-H-36SBR-TOP-32	Book Return w Top Slot, 36"W X 30"D X 32" H	204	\$3,399
	MCD-H-36SBR-TOP-39	Book Return w Top Slot, 36"W X 30"D X 39" H	218	\$3,429
Cupboard Units	Model Number	Description	Wgt.	List Price
	MCD-H-36CS-29	Cupboard Unit, 36"W X 30"D X 29" H	189	\$3,334
	MCD-H-36CS-32	Cupboard Unit, 36"W X 30"D X 32" H	192	\$3,334
	MCD-H-36CS-39	Cupboard Unit, 36"W X 30"D X 39" H	210	\$3,371
Cupboard Unit With Drawer	Model Number	Description	Wgt.	List Price
	MCD-H-36CD-29	Cupboard Unit, 36"W X 30"D X 29" H with drawer	201	\$3,835
	MCD-H-36CD-32	Cupboard Unit, 36"W X 30"D X 32" H with drawer	207	\$3,835
	MCD-H-36CD-39	Cupboard Unit, 36"W X 30"D X 39" H with drawer	225	\$3,867

Heritage

Circulation Desks

Cupboard Unit With 2 & 3 Drawers (Cupboard Left)	Model Number	Description	Wgt.	List Price
	MCD-H-36C2DL-29	Cupboard Unit, Left, 36"W X 30"D X 29" H with 2 drawers, file/file	222	\$4,906
	MCD-H-36C2DL-32	Cupboard Unit, Left, 36"W X 30"D X 32" H with 2 drawers, file/file	225	\$4,906
	MCD-H-36C3DL-32	Cupboard Unit, Left, 36"W X 30"D X 32" H with 3 drawers, box/ box/file	230	\$5,090
	MCD-H-36C3DL-39	Cupboard Unit, Left, 36"W X 30"D X 39" H with 3 drawers, box/ file/file	256	\$5,138
Cupboard Unit With 2 & 3 Drawers (Cupboard Right)	Model Number	Description	Wgt.	List Price
	MCD-H-36C2DR-29	Cupboard Unit, Right, 36"W X 30"D X 29" H with 2 drawers, file/file	222	\$4,906
	MCD-H-36C2DR-32	Cupboard Unit, Right, 36"W X 30"D X 32" H with 2 drawers, file/file	225	\$4,906
	MCD-H-36C3DR-32	Cupboard Unit, Right, 36"W X 30"D X 32" H with 3 drawers, box/ box/file	230	\$5,090
	MCD-H-36C3DR-39	Cupboard Unit, Right, 36"W X 30"D X 39" H with 3 drawers, box/ file/file	256	\$5,138
Cupboard Unit With Open Storage (Cupboard Left)	Model Number	Description	Wgt.	List Price
	MCD-H-36COSL-29	Cupboard Unit, Left, 36"W X 30"D X 29" H with open storage	186	\$3,492
	MCD-H-36COSL-32	Cupboard Unit, Left, 36"W X 30"D X 32" H with open storage	190	\$3,492
	MCD-H-36COSL-39	Cupboard Unit, Left, 36"W X 30"D X 39" H with open storage	204	\$3,540
Cupboard Unit With Open Storage (Cupboard Right)	Model Number	Description	Wgt.	List Price
	MCD-H-36COSR-29	Cupboard Unit, Right, 36"W X 30"D X 29" H with open storage	186	\$3,492
	MCD-H-36COSR-32	Cupboard Unit, Right, 36"W X 30"D X 32" H with open storage	190	\$3,492
	MCD-H-36COSR-39	Cupboard Unit, Right, 36"W X 30"D X 39" H with open storage	204	\$3,540
Open Storage Units	Model Number	Description	Wgt.	List Price
	MCD-H-36OS-29	Open Storage, 36"W X 30"D X 29" H	185	\$2,675
	MCD-H-36OS-32	Open Storage, 36"W X 30"D X 32" H	189	\$2,675
	MCD-H-36OS-39	Open Storage, 36"W X 30"D X 39" H	202	\$2,697
Open Storage Unit With Drawer	Model Number	Description	Wgt.	List Price
	MCD-H-36OSD-29	Open Storage, 36"W X 30"D X 29" H with drawer	200	\$3,283
	MCD-H-36OSD-32	Open Storage, 36"W X 30"D X 32" H with drawer	204	\$3,283
	MCD-H-36OSD-39	Open Storage, 36"W X 30"D X 39" H with drawer	218	\$3,312
Open Storage Unit With 2 & 3 Drawers (Open Storage Left)	Model Number	Description	Wgt.	List Price
	MCD-H-36OS2DL-29	Open Storage, Left, 36"W X 30"D X 29" H with 2 drawers, file/file	209	\$4,756
	MCD-H-36OS2DL-32	Open Storage, Left, 36"W X 30"D X 32" H with 2 drawers, file/file	212	\$4,756
	MCD-H-36OS3DL-32	Open Storage, Left, 36"W X 30"D X 32" H with 3 drawers, box/ box/file	220	\$4,937
	MCD-H-36OS3DL-39	Open Storage, Left, 36"W X 30"D X 39" H with 3 drawers, box/ file/file	240	\$5,151
Open Storage Unit With 2 & 3 Drawers (Open Storage Right)	Model Number	Description	Wgt.	List Price
	MCD-H-36OS2DR-29	Open Storage, Right, 36"W X 30"D X 29" H with 2 drawers, file/file	209	\$4,756
	MCD-H-36OS2DR-32	Open Storage, Right, 36"W X 30"D X 32" H with 2 drawers, file/file	212	\$4,756
	MCD-H-36OS3DR-32	Open Storage, Right, 36"W X 30"D X 32" H with 3 drawers, box/ box/file	220	\$4,937
	MCD-H-36OS3DR-39	Open Storage, Right, 36"W X 30"D X 39" H with 3 drawers, box/ file/file	240	\$5,151
Kneespace Unit	Model Number	Description	Wgt.	List Price
	MCD-H-36KS-32	Kneespace Unit, 36"W X 30"D X 32" H	138	\$3,089
	MCD-H-36KS-39	Kneespace Unit, 36"W X 30"D X 39" H	151	\$3,117
Corner Units 45 Degree Flat	Model Number	Description	Wgt.	List Price
	MCD-H-30FC45-29	Flat Corner, 30"W X 30"D X 29" H	74	\$2,879
	MCD-H-30FC45-32	Flat Corner, 30"W X 30"D X 32" H	77	\$2,879
	MCD-H-30FC45-39	Flat Corner, 30"W X 30"D X 39" H	84	\$3,157

* Note: For Triangle Corner Unit with Shelves, use Bookmark MCD-TCS units.

Prices and specifications subject to change without notice

P-HERITAGECIRCDSESKS-210322

Heritage

Circulation Desks

90 Degree Extended Flat	Model Number	Description	Wgt.	List Price
	MCD-H-30EFC-29	Flat Ext. Corner, 66"W X 30"D X 29" H	168	\$5,310
	MCD-H-30EFC-32	Flat Ext. Corner, 66"W X 30"D X 32" H	177	\$5,310
	MCD-H-30EFC-39	Flat Ext. Corner, 66"W X 30"D X 39" H	190	\$5,463

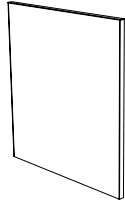
90 Degree Square	Model Number	Description	Wgt.	List Price
	MCD-H-30SC-29	Square Corner, 30"W X 30"D X 29" H	152	\$3,412
	MCD-H-30SC-32	Square Corner, 30"W X 30"D X 32" H	155	\$3,412
	MCD-H-30SC-39	Square Corner, 30"W X 30"D X 39" H	170	\$3,433

Triangle Corner Unit	Model Number	Description	Wgt.	List Price
	MCD-H-30TC-29	Triangle Corner, 30"W X 30"D X 29" H	88	\$2,686
	MCD-H-30TC-32	Triangle Corner, 30"W X 30"D X 32" H	91	\$2,686
	MCD-H-30TC-39	Triangle Corner, 30"W X 30"D X 39" H	98	\$2,828

* Note: For Triangle Corner Unit with Shelves, use Bookmark MCD-TCS units.

Circulation Desk End Panels

Note: One Terminating End Panel is required for each exposed end of a complete desk assembly. End Panels are available in all standard design lines. Terminating end panels are available to create right or left facing units. Right side and left side is determined from the perspective of the desk user.



Heritage	Model Number	Description	Wgt.	Price
	MCD-H-29EP-LH	Heritage Finished Left End Panel for 29"H Unit	19	\$627
	MCD-H-29EP-RH	Heritage Finished Right End Panel for 29"H Unit	19	\$627
	MCD-H-32EP-LH	Heritage Finished Left End Panel for 32"H Unit	20	\$627
	MCD-H-32EP-RH	Heritage Finished Right End Panel for 32"H Unit	20	\$627
	MCD-H-39EP-LH	Heritage Finished Left End Panel for 39"H Unit	24	\$716
	MCD-H-39EP-RH	Heritage Finished Right End Panel for 39"H Unit	24	\$716

Transactions Tops

Transaction Tops				
	MCD-H-36-TRX	Heritage Transaction Top 36"W X 7"H	19	\$638
	MCD-H-72-TRX	Heritage Transaction Top 72"W X 7"H	33	\$1,221
	MCD-H-30SC-TRX	Heritage Transaction Top Square Unit 9"D X 7"H	19	\$1,523
	MCD-H-30EFC-TRX	Heritage Transaction Top Extended Flat 9"D X 7"H	30	\$1,770

Mobile Pedestals	Model Number	Description	Wgt.	List Price
	WMP661222	6/6/12 X 22" D Mobile Pedestal, steel with steel fronts	42	\$791
	WMP121222	12/12 X 22" D Mobile Pedestal, steel with steel fronts	38	\$710
	WMP661222-SW	6/6/12 X 22" D Mobile Pedestal, steel with wood fronts	54	\$1,356
	WMP121222-SW	12/12 X 22" D Mobile Pedestal, steel with wood fronts	50	\$1,274
	WMP661222-W	6/6/12 X 22" D Mobile Pedestal, wood with wood fronts	66	\$1,356
	WMP121222-W	12/12 X 22" D Mobile Pedestal, wood with wood fronts	62	\$1,274



WKS Supporting Pedestals	Model Number	Description	Wgt.	List Price
	WP661222	6/6/12 X 22" D WKS Supporting Ped, steel with steel fronts	46	\$769
	WP121222	12/12 X 22" D WKS Supporting Ped, steel with steel fronts	42	\$705
	WP661222-SW	6/6/12 X 22" D WKS Supporting Ped, steel with wood fronts	58	\$1,225
	WP121222-SW	12/12 X 22" D WKS Supporting Ped, steel with wood fronts	62	\$1,164
	WP661222-W	6/6/12 X 22" D WKS Supporting Ped, wood with wood fronts	69	\$1,648
	WP121222-W	12/12 X 22" D WKS Supporting Ped, wood with wood fronts	65	\$1,322

