

Compact Disc Browser

General Specifications

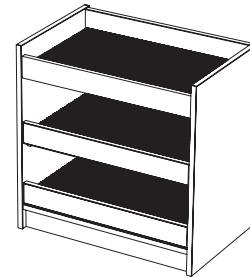
Case is constructed of 1" nine ply red oak plywood with a recessed top. Three drawers, bottom 2 drawers pull out. Each shelf holds a maximum of 145 compact discs. Total capacity of 435 discs.

The top and base of recessed bin are constructed of 1" thick baltic birch plywood core with high-pressure laminate interior and exterior and exposed baltic birch plywood edges. Sides, leg panels and bin divider panels all constructed of 3/4" thick baltic birch plywood core with high-pressure laminate or wood veneer interior and exterior and exposed baltic birch plywood edges. Leg panels fitted with non-levelling glides.

Required to order: Model # including options if applicable

- HPL Selection
- Wood finish selection

Compact Disc Browser			
Model Number	Description	Wgt.	List Price
B2437CDB	24" D X 37" W X 37" H	110	\$4,385



B2437CDB

Browser & Binny

General Specifications

The end panels are 1" thick veneer core hardwood plywood with grade A oak veneer face and 1.5mm solid red oak banding. Bottom shelf and browser bin with dividers are all 1" three ply construction with grade A oak veneer face and 1.5mm solid red oak banding. Toes are constructed of 4" high 1" thick veneer core hardwood plywood and are attached using 14-gauge steel brackets. Concealed 2" diameter casters are bolted to a steel chassis that fits inside the wood toe on mobile unit.

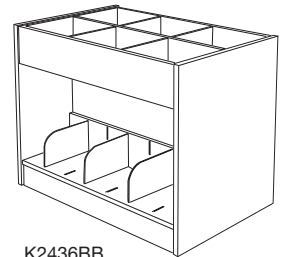
Browser & Binny			
Model Number	Description	Wgt.	List Price
K2436BB	24" D X 37" W X 36" H	80	\$2,059
K2436BB-MOB	24" D X 37" W X 36" H	80	\$2,378
K2436ABB-J-MOB	24" D X 37" W X 30" H	80	\$2,598
K2436ABB-MOB	24" D X 37" W X 36" H	80	\$2,598

Required to order: Model # including options if applicable

- HPL Selection
- Wood finish selection



K2436ABB



K2436BB

Cubby

General Specifications

The 30" deep, 34-18" high arched-top end panels are 11/16" thick particleboard core with grade .050 high-pressure laminate faces and 3mm PVC banding. Bottom shelf is 11/16" particleboard core with .050" high-pressure laminate face, .030 phenolic backer and 3mm PVC banding. Fixed browser shelf is 3/4" particleboard core with .050" high-pressure laminate face and .030 phenolic backer. End panels, back panel and face panels are 11/16" particleboard core with .050" high-pressure laminate. Toe kicks are constructed of 2-1/2" high 11/16" particleboard board core with .050" high-pressure laminate faces and .030" phenolic backer. Concealed 2" diameter casters are bolted to a steel chassis that fits inside the toe.

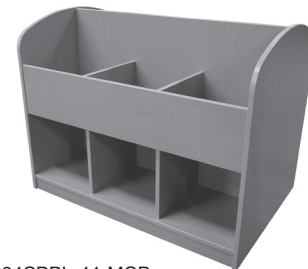
This laminate mobile browser bin features arched end panels with a 34"H shared back panel, plus six browser bins and 6 lower storage cubbies. The mobile browser bin unit is 30" deep, 44" wide and 34-1/8" high. Each side of the browser bin features three 14"D x 14"W x 13"H lower open storage cubbies and three 14"D x 14"W x 8"H browser bins.

Required to order: Model # including options if applicable

- HPL Selection
- PVC selection

Cubby			
Model Number	Description	Wgt.	List Price
K3034BB-44-MOB	30" D X 34" W X 44" H	80	\$2,654

Note: K3034BB-44-MOB holds roughly 200-320 books per unit.



K3034CBBL-44-MOB

Set Up Charges and Upcharges for Non-Standard and Custom Finishes

Model Number	Description	List Price
Non-Standard PVC	Upcharge, per color, per order, for non-standard PVC	\$865
Custom Finish	Upcharge for custom stain finish	\$608
Non-Standard Stain	Upcharge for non-standard stains already matched	\$268
Sprayon Finish	Upcharge, per color, per order, for Sprayon finish	\$312

Note: Prices for items with wood veneer or edges is based on oak. Use of maple or other species may incur an upcharge.