

Modular Circulations Desks

General Specifications - Circulation Desks

Modular Case System: Each case module is fully assembled, allowing for simple field assembly of the complete circulation desk as well as for easy reconfiguration, if necessary. Cases connect with male/female threaded metal connectors.

Top: Tops are 1-1/4" thick, three ply engineered wood construction with .050" High pressure laminate, HPL, and a phenolic backer sheet. The patron side is edged with 5/16" x 1-1/4" solid red oak (with the exception on the Malibu and Keystone design have 1-5/8") with a 1/4" radius top and bottom. The edges and back side of the top are edged with 1/8" solid red oak.

Case Construction: Circulation desk modules are constructed of 3/4" thick, three ply particleboard with plain sliced "A" grade oak veneer. All modules, except Malibu style, utilize a continuous front design (sides do not penetrate), with a 4" High recessed toe. Cabinets are assembled using glue and dowel joinery. Note: One Terminating End Panel is required for each exposed end of a complete desk assembly. Terminating end panels are available to create right or left facing units. Right side and left side is determined from the perspective of the desk user.

Adjustable Shelves: Adjustable shelves are 3/4" thick three ply particleboard plywood with "A" grade oak veneer faces. The exposed edges are edged with 1/8" solid red oak. Shelves are adjustable on 32mm increments.

Drawers: Drawers are constructed of 1/2" nine ply baltic birch plywood. Drawers have 3/4" thick fronts with "A" grade oak veneer. Box drawers have 100 lb. full extension slides, file drawers have 100 lb. full extension slides.

Doors: Doors are constructed of 3/4" thick, three ply particleboard with plain sliced "A" grade oak veneer faces and edged on all sides with 1/8" solid red oak. Door hardware includes concealed hinges, fully adjustable in all 3 axes, and wire pulls.

Continuous Top Construction: Tops may be specified as continuous.

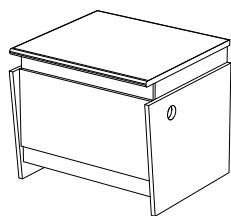
Locks: Units may be specified with doors and or drawers locking, keyed random or alike.

Design Lines: mediatechnologies® offers seven design lines of circulation desk modules, all using the general construction specifications above.

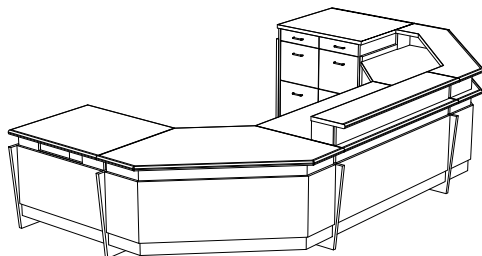
To specify a design line you must include a letter indicator: No letter indicator will specify our standard Bookmark design.

M-Metro **L**-Lexington **H**-Heritage **MB**-Malibu
CL-Charleston **KS**-Keystone

Please see below for design descriptions



Keystone: modern style design using laminate inlay details and tapered end panels. Model Number example for Keystone Desk unit; MCD-KS-36D-29



Desk Units				
36" Wide	Model Number	Description	Wgt.	List Price
	MCD-KS-36D-29	Desk Unit, 36"W X 30"D X 29" H	120	\$4,020
	MCD-KS-36D-32	Desk Unit, 36"W X 30"D X 32" H	126	\$4,020
	MCD-KS-36D-39	Desk Unit, 36"W X 30"D X 39" H	141	\$4,167
	MCD-KS-36D-32-ADJ	Desk Unit, 36"W X 30"D X ADJ. H	126	\$4,375
48" Wide	Model Number	Description	Wgt.	List Price
	MCD-KS-48D-29	Desk Unit, 48"W X 30"D X 29" H	131	\$5,354
	MCD-KS-48D-32	Desk Unit, 48"W X 30"D X 32" H	138	\$5,354
	MCD-KS-48D-39	Desk Unit, 48"W X 30"D X 39" H	153	\$5,672
	MCD-KS-48D-32-ADJ	Desk Unit, 48"W X 30"D X ADJ. H	138	\$6,221
72" Wide	Model Number	Description	Wgt.	List Price
	MCD-KS-72D-29	Desk Unit, 72"W X 30"D X 29" H	206	\$6,722
	MCD-KS-72D-32	Desk Unit, 72"W X 30"D X 32" H	212	\$6,722
	MCD-KS-72D-39	Desk Unit, 72"W X 30"D X 39" H	230	\$6,744
	MCD-KS-72D-32-ADJ	Desk Unit, 72"W X 30"D X ADJ. H	212	\$7,817
Book Return	Model Number	Description	Wgt.	List Price
	MCD-KS-36BR-29	Book Return, 36"W X 30"D X 29" H	118	\$4,194
	MCD-KS-36BR-32	Book Return, 36"W X 30"D X 32" H	124	\$4,194
	MCD-KS-36BR-39	Book Return, 36"W X 30"D X 39" H	139	\$4,343
Descending Platform BookTruck	Model Number	Description	Wgt.	List Price
	MCD-DBT-1824-21	Depressible Platform Book Truck, 18"D x 24.25"W x 21"H, For curved 29"H Book Return Units and Nomad Book Return	135	\$3,107
	MCD-DBT-1824-24	Depressible Platform Book Truck, 18"D x 24.25"W x 24"H, For Curved 32"-39"H Book Return Units	135	\$3,107
	MCD-DBT-2424-21	Depressible Platform Book Truck, 23.625"D x 24.25"W x 21"H, For 29"H Book Return Units with Extended Chutes and 32"H Keystone and Malibu Book Returns	137	\$3,107
	MCD-DBT-2424-24	Depressible Platform Book Truck, 23.625"D x 24.25"W x 24"H, For 32" and 39"H Book Return Units	137	\$3,107
Top Surface Slot Book Return Module with Drawer and Shelf Storage	Model Number	Description	Wgt.	List Price
	MCD-KS-36SBR-TOP-29	Book Return w Top Slot, 36"W X 30"D X 29" H	200	\$5,358
	MCD-KS-36SBR-TOP-32	Book Return w Top Slot, 36"W X 30"D X 32" H	204	\$5,358
	MCD-KS-36SBR-TOP-39	Book Return w Top Slot, 36"W X 30"D X 39" H	218	\$5,391
Cupboard Units	Model Number	Description	Wgt.	List Price
	MCD-KS-36CS-29	Cupboard Unit, 36"W X 30"D X 29" H	189	\$5,274
	MCD-KS-36CS-32	Cupboard Unit, 36"W X 30"D X 32" H	192	\$5,274
	MCD-KS-36CS-39	Cupboard Unit, 36"W X 30"D X 39" H	210	\$5,310

Circulation Desks

Cupboard Unit With Drawer	Model Number	Description	Wgt.	List Price
	MCD-KS-36CD-29	Cupboard Unit, 36"W X 30"D X 29" H with drawer	201	\$5,828
	MCD-KS-36CD-32	Cupboard Unit, 36"W X 30"D X 32" H with drawer	207	\$5,828
	MCD-KS-36CD-39	Cupboard Unit, 36"W X 30"D X 39" H with drawer	225	\$5,859
Cupboard Unit With 2 & 3 Drawers (Cupboard Left)	Model Number	Description	Wgt.	List Price
	MCD-KS-36C2DL-29	Cupboard Unit, Left, 36"W X 30"D X 29" H with 2 drawers, file/file	222	\$6,993
	MCD-KS-36C2DL-32	Cupboard Unit, Left, 36"W X 30"D X 32" H with 2 drawers, file/file	225	\$6,993
	MCD-KS-36C3DL-32	Cupboard Unit, Left, 36"W X 30"D X 32" H with 3 drawers, box/box/file	230	\$7,213
	MCD-KS-36C3DL-39	Cupboard Unit, Left, 36"W X 30"D X 39" H with 3 drawers, box/file/file	256	\$7,262
Cupboard Unit With 2 & 3 Drawers (Cupboard Right)	Model Number	Description	Wgt.	List Price
	MCD-KS-36C2DR-29	Cupboard Unit, Right, 36"W X 30"D X 29" H with 2 drawers, file/file	222	\$6,993
	MCD-KS-36C2DR-32	Cupboard Unit, Right, 36"W X 30"D X 32" H with 2 drawers, file/file	225	\$6,993
	MCD-KS-36C3DR-32	Cupboard Unit, Right, 36"W X 30"D X 32" H with 3 drawers, box/box/file	230	\$7,213
	MCD-KS-36C3DR-39	Cupboard Unit, Right, 36"W X 30"D X 39" H with 3 drawers, box/file/file	256	\$7,262
Cupboard Unit With Open Storage (Cupboard Left)	Model Number	Description	Wgt.	List Price
	MCD-KS-36COSL-29	Cupboard Unit, Left, 36"W X 30"D X 29" H with open storage	186	\$5,447
	MCD-KS-36COSL-32	Cupboard Unit, Left, 36"W X 30"D X 32" H with open storage	190	\$5,447
	MCD-KS-36COSL-39	Cupboard Unit, Left, 36"W X 30"D X 39" H with open storage	204	\$5,498
Cupboard Unit With Open Storage (Cupboard Right)	Model Number	Description	Wgt.	List Price
	MCD-KS-36COSR-29	Cupboard Unit, Right, 36"W X 30"D X 29" H with open storage	186	\$5,447
	MCD-KS-36COSR-32	Cupboard Unit, Right, 36"W X 30"D X 32" H with open storage	190	\$5,447
	MCD-KS-36COSR-39	Cupboard Unit, Right, 36"W X 30"D X 39" H with open storage	204	\$5,498
Open Storage Units	Model Number	Description	Wgt.	List Price
	MCD-KS-36OS-29	Open Storage, 36"W X 30"D X 29" H	185	\$4,545
	MCD-KS-36OS-32	Open Storage, 36"W X 30"D X 32" H	189	\$4,545
	MCD-KS-36OS-39	Open Storage, 36"W X 30"D X 39" H	202	\$4,570
Open Storage Unit With Drawer	Model Number	Description	Wgt.	List Price
	MCD-KS-36OSD-29	Open Storage, 36"W X 30"D X 29" H with drawer	200	\$5,216
	MCD-KS-36OSD-32	Open Storage, 36"W X 30"D X 32" H with drawer	204	\$5,216
	MCD-KS-36OSD-39	Open Storage, 36"W X 30"D X 39" H with drawer	218	\$5,248
Open Storage Unit With 2 & 3 Drawers (Open Storage Left)	Model Number	Description	Wgt.	List Price
	MCD-KS-36OS2DL-29	Open Storage, Left, 36"W X 30"D X 29" H with 2 drawers, file/file	209	\$6,864
	MCD-KS-36OS2DL-32	Open Storage, Left, 36"W X 30"D X 32" H with 2 drawers, file/file	212	\$6,864
	MCD-KS-36OS3DL-32	Open Storage, Left, 36"W X 30"D X 32" H with 3 drawers, box/box/file	220	\$7,039
	MCD-KS-36OS3DL-39	Open Storage, Left, 36"W X 30"D X 39" H with 3 drawers, box/file/file	240	\$7,278
Open Storage Unit With 2 & 3 Drawers (Open Storage Right)	Model Number	Description	Wgt.	List Price
	MCD-KS-36OS2DR-29	Open Storage, Right, 36"W X 30"D X 29" H with 2 drawers, file/file	209	\$6,864
	MCD-KS-36OS2DR-32	Open Storage, Right, 36"W X 30"D X 32" H with 2 drawers, file/file	212	\$6,864
	MCD-KS-36OS3DR-32	Open Storage, Right, 36"W X 30"D X 32" H with 3 drawers, box/box/file	220	\$7,039
	MCD-KS-36OS3DR-39	Open Storage, Right, 36"W X 30"D X 39" H with 3 drawers, box/file/file	240	\$7,278

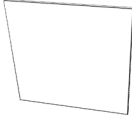
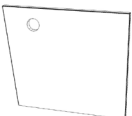
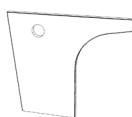
Circulation Desks

Kneespace Unit	Model Number	Description	Wgt.	List Price
	MCD-KS-36KS-32	Kneespace Unit, 36"W X 30"D X 32" H	138	\$4,998
	MCD-KS-36KS-39	Kneespace Unit, 36"W X 30"D X 39" H	151	\$5,034
Corner Units				
45 Degree Radius	Model Number	Description	Wgt.	List Price
	MCD-KS-30RC45-29	Radius Corner, 30"W X 30"D X 29" H	74	\$4,823
	MCD-KS-30RC45-32	Radius Corner, 30"W X 30"D X 32" H	77	\$4,823
	MCD-KS-30RC45-39	Radius Corner, 30"W X 30"D X 39" H	84	\$5,290
45 Degree Flat	Model Number	Description	Wgt.	List Price
	MCD-KS-30FC45-29	Flat Corner, 30"W X 30"D X 29" H	74	\$4,965
	MCD-KS-30FC45-32	Flat Corner, 30"W X 30"D X 32" H	77	\$4,965
	MCD-KS-30FC45-39	Flat Corner, 30"W X 30"D X 39" H	84	\$5,447
90 Degree Radius	Model Number	Description	Wgt.	List Price
	MCD-KS-30RC-29	Radius Corner, 30"W X 30"D X 29" H	148	\$5,294
	MCD-KS-30RC-32	Radius Corner, 30"W X 30"D X 32" H	153	\$5,294
	MCD-KS-30RC-39	Radius Corner, 30"W X 30"D X 39" H	168	\$5,468
90 Degree Radius with Shelves	Model Number	Description	Wgt.	List Price
	MCD-KS-30RCS-29	Radius Corner, 30"W X 30"D X 29" H	158	\$6,422
	MCD-KS-30RCS-32	Radius Corner, 30"W X 30"D X 32" H	163	\$6,422
	MCD-KS-30RCS-39	Radius Corner, 30"W X 30"D X 39" H	178	\$6,592
90 Degree Extended Radius	Model Number	Description	Wgt.	List Price
	MCD-KS-30ERC-29	Radius Ext. Corner, 66"W X 34"D X 29" H	276	\$9,288
	MCD-KS-30ERC-32	Radius Ext. Corner, 66"W X 34"D X 32" H	284	\$9,288
	MCD-KS-30ERC-39	Radius Ext. Corner, 66"W X 34"D X 39" H	306	\$9,287
90 Degree Extended Flat	Model Number	Description	Wgt.	List Price
	MCD-KS-30EFC-29	Flat Corner, 66"W X 30"D X 29" H extended unit	226	\$7,388
	MCD-KS-30EFC-32	Flat Corner, 66"W X 30"D X 32" H extended unit	232	\$7,388
	MCD-KS-30EFC-39	Flat Corner, 66"W X 30"D X 39" H extended unit	250	\$7,598
90 Degree Square	Model Number	Description	Wgt.	List Price
	MCD-KS-30SC-29	Square Corner, 30"W X 30"D X 29"H	152	\$4,061
	MCD-KS-30SC-32	Square Corner, 30"W X 30"D X 32"H	155	\$4,061
	MCD-KS-30SC-39	Square Corner, 30"W X 30"D X 39"H	170	\$4,222
Triangle Corner Unit	Model Number	Description	Wgt.	List Price
	MCD-KS-30TC-29	Triangle Corner, 30"W X 30"D X 29" H	88	\$4,061
	MCD-KS-30TC-32	Triangle Corner, 30"W X 30"D X 32" H	91	\$4,061
	MCD-KS-30TC-39	Triangle Corner, 30"W X 30"D X 39" H	98	\$4,222
Triangle Corner Unit with Shelves	Model Number	Description	Wgt.	List Price
	MCD-KS-30TCS-29	Triangle Corner, 30"W X 30"D X 29" H with shelves	87	\$3,747
	MCD-KS-30TCS-32	Triangle Corner, 30"W X 30"D X 32" H with shelves	89	\$3,747
	MCD-KS-30TCS-39	Triangle Corner, 30"W X 30"D X 39" H with shelves	97	\$3,898

* Note: For Triangle Corner Unit with Shelves, use Bookmark MCD-TCS units.

Mid and Terminating End Panels

Note: One Terminating End Panel is required for each exposed end of a complete desk assembly. End Panels are available in all standard design lines. Terminating end panels are available to create right or left facing units. Right side and left side is determined from the perspective of the desk user.

Keystone	Model Number	Description	Wgt.	Price
	MCD-KS-29EP-LH	Keystone Finished End Panel, left hand	19	\$839
	MCD-KS-29EP-RH	Keystone Finished End Panel, right hand	19	\$839
	MCD-KS-29IP	Keystone Mid Panel	19	\$839
	MCD-KS-29IP-KS	Keystone Mid Panel, Kneespace	19	\$839

Transactions Tops

Keystone	Model Number	Description	Wgt.	List Price
	MCD-KS-36-TRX	Keystone Transaction Top 36"W X 7"H	19	\$806
	MCD-KS-72-TRX	Keystone Transaction Top 72"W X 7"H	33	\$1,532
	MCD-KS-30SC-TRX	Keystone Transaction Top for Square Unit 9"D X 7"H	19	\$1,908

Set Up Charges and Upcharges for Non-Standard and Custom Finishes

Model Number	Description	List Price
Non-Standard PVC	Upcharge, per color, per order, for non-standard PVC	\$865
Custom Finish	Upcharge for custom stain finish	\$608
Non-Standard Stain	Upcharge for non-standard stains already matched	\$268
Sprayon Finish	Upcharge, per color, per order, for Sprayon finish	\$312