

Modular Circulations Desks

General Specifications - Circulation Desks

Modular Case System: Each case module is fully assembled, allowing for simple field assembly of the complete circulation desk as well as for easy reconfiguration, if necessary. Cases connect with male/female threaded metal connectors.

Top: Tops are 1-1/4" thick, three ply engineered wood construction with .050" High pressure laminate, HPL, and a phenolic backer sheet. The patron side is edged with 5/16" x 1-1/4" solid red oak (with the exception on the Malibu and Keystone design have 1-5/8") with a 1/4" radius top and bottom. The edges and back side of the top are edged with 1/8" solid red oak.

Case Construction: Circulation desk modules are constructed of 3/4" thick, three ply particleboard with plain sliced "A" grade oak veneer. All modules, except Malibu style, utilize a continuous front design (sides do not penetrate), with a 4" High recessed toe. Cabinets are assembled using glue and dowel joinery. Note: One Terminating End Panel is required for each exposed end of a complete desk assembly.

Adjustable Shelves: Adjustable shelves are 3/4" thick three ply particleboard plywood with "A" grade oak veneer faces. The exposed edges are edged with 1/8" solid red oak. Shelves are adjustable on 32mm increments.

Drawers: Drawers are constructed of 1/2" nine ply baltic birch plywood. Drawers have 3/4" thick fronts with "A" grade oak veneer. Box drawers have 100 lb. full extension slides, file drawers have 100 lb. full extension slides.

Doors: Doors are constructed of 3/4" thick, three ply particleboard with plain sliced "A" grade oak veneer faces and edged on all sides with 1/8" solid red oak. Door hardware includes concealed hinges, fully adjustable in all 3 axes, and wire pulls.

Continuous Top Construction: Tops may be specified as continuous.

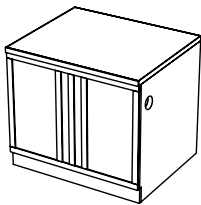
Locks: Units may be specified with doors and or drawers locking, keyed random or alike.

Design Lines: mediatechnologies® offers seven design lines of circulation desk modules, all using the general construction specifications above.

To specify a design line you must include a letter indicator: No letter indicator will specify our standard Bookmark design.

M-Metro **L**-Lexington **H**-Heritage **MB**-Malibu
CL-Charleston **KS**-Keystone

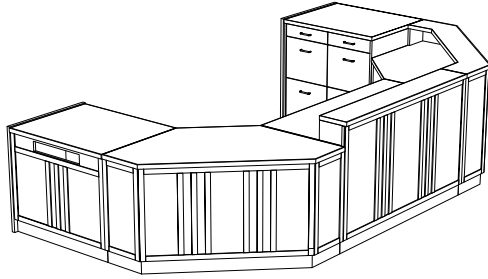
Please see below for design descriptions



Heritage: a mission style design line, also using solid oak details applied to the patron side of most modular units. Model Number example for Heritage Desk unit; MCD-H-36D-29

Heritage

Circulation Desks



Desk Units				
36" Wide	Model Number	Description	Wgt.	List Price
	MCD-H-36D-29	Desk Unit, 36"W X 30"D X 29" H	120	\$2,435
	MCD-H-36D-32	Desk Unit, 36"W X 30"D X 32" H	126	\$2,435
	MCD-H-36D-39	Desk Unit, 36"W X 30"D X 39" H	141	\$2,588
	MCD-H-36D-32-ADJ	Desk Unit, 36"W X 30"D X ADJ. H	126	\$2,651
48" Wide	Model Number	Description	Wgt.	List Price
	MCD-H-48D-29	Desk Unit, 48"W X 30"D X 29" H	131	\$3,246
	MCD-H-48D-32	Desk Unit, 48"W X 30"D X 32" H	138	\$3,246
	MCD-H-48D-39	Desk Unit, 48"W X 30"D X 39" H	153	\$3,445
	MCD-H-48D-32-ADJ	Desk Unit, 48"W X 30"D X ADJ. H	138	\$3,536
72" Wide	Model Number	Description	Wgt.	List Price
	MCD-H-72D-29	Desk Unit, 72"W X 30"D X 29" H	206	\$4,948
	MCD-H-72D-32	Desk Unit, 72"W X 30"D X 32" H	212	\$4,948
	MCD-H-72D-39	Desk Unit, 72"W X 30"D X 39" H	230	\$4,974
	MCD-H-72D-32-ADJ	Desk Unit, 72"W X 30"D X ADJ. H	212	\$5,394
Book Return	Model Number	Description	Wgt.	List Price
	MCD-H-36BR-29	Book Return, 36"W X 30"D X 29" H	118	\$2,608
	MCD-H-36BR-32	Book Return, 36"W X 30"D X 32" H	124	\$2,608
	MCD-H-36BR-39	Book Return, 36"W X 30"D X 39" H	139	\$2,767
Descending Platform Book Truck	Model Number	Description	Wgt.	List Price
	MCD-DBT-1824-21	Depressible Platform Book Truck, 18"D x 24.25"W x 21"H, For curved 29"H Book Return Units and Nomad Book Return	135	\$2,832
	MCD-DBT-1824-24	Depressible Platform Book Truck, 18"D x 24.25"W x 24"H, For Curved 32"-39"H Book Return Units	135	\$2,832
	MCD-DBT-2424-21	Depressible Platform Book Truck, 23.625"D x 24.25"W x 21"H, For 29"H Book Return Units with Extended Chutes and 32"H Keystone and Malibu Book Returns	137	\$2,832
	MCD-DBT-2424-24	Depressible Platform Book Truck, 23.625"D x 24.25"W x 24"H, For 32" and #("H Book Return Units	137	\$2,832
Top Surface Slot Book Return Module with Drawer and Shelf Storage	Model Number	Description	Wgt.	List Price
	MCD-H-36SBR-TOP-29	Book Return w Top Slot, 36"W X 30"D X 29" H	200	\$3,767
	MCD-H-36SBR-TOP-32	Book Return w Top Slot, 36"W X 30"D X 32" H	204	\$3,767
	MCD-H-36SBR-TOP-39	Book Return w Top Slot, 36"W X 30"D X 39" H	218	\$3,800
Cupboard Units	Model Number	Description	Wgt.	List Price
	MCD-H-36CS-29	Cupboard Unit, 36"W X 30"D X 29" H	189	\$3,695
	MCD-H-36CS-32	Cupboard Unit, 36"W X 30"D X 32" H	192	\$3,695
	MCD-H-36CS-39	Cupboard Unit, 36"W X 30"D X 39" H	210	\$3,736
Cupboard Unit With Drawer	Model Number	Description	Wgt.	List Price
	MCD-H-36CD-29	Cupboard Unit, 36"W X 30"D X 29" H with drawer	201	\$4,250
	MCD-H-36CD-32	Cupboard Unit, 36"W X 30"D X 32" H with drawer	207	\$4,250
	MCD-H-36CD-39	Cupboard Unit, 36"W X 30"D X 39" H with drawer	225	\$4,286

Heritage

Circulation Desks

Cupboard Unit With 2 & 3 Drawers (Cupboard Left)	Model Number	Description	Wgt.	List Price
	MCD-H-36C2DL-29	Cupboard Unit, Left, 36"W X 30"D X 29" H with 2 drawers, file/file	222	\$5,437
	MCD-H-36C2DL-32	Cupboard Unit, Left, 36"W X 30"D X 32" H with 2 drawers, file/file	225	\$5,437
	MCD-H-36C3DL-32	Cupboard Unit, Left, 36"W X 30"D X 32" H with 3 drawers, box/box/file	230	\$5,640
	MCD-H-36C3DL-39	Cupboard Unit, Left, 36"W X 30"D X 39" H with 3 drawers, box/file/file	256	\$5,694
Cupboard Unit With 2 & 3 Drawers (Cupboard Right)	Model Number	Description	Wgt.	List Price
	MCD-H-36C2DR-29	Cupboard Unit, Right, 36"W X 30"D X 29" H with 2 drawers, file/file	222	\$5,437
	MCD-H-36C2DR-32	Cupboard Unit, Right, 36"W X 30"D X 32" H with 2 drawers, file/file	225	\$5,437
	MCD-H-36C3DR-32	Cupboard Unit, Right, 36"W X 30"D X 32" H with 3 drawers, box/box/file	230	\$5,640
	MCD-H-36C3DR-39	Cupboard Unit, Right, 36"W X 30"D X 39" H with 3 drawers, box/file/file	256	\$5,694
Cupboard Unit With Open Storage (Cupboard Left)	Model Number	Description	Wgt.	List Price
	MCD-H-36COSL-29	Cupboard Unit, Left, 36"W X 30"D X 29" H with open storage	186	\$3,870
	MCD-H-36COSL-32	Cupboard Unit, Left, 36"W X 30"D X 32" H with open storage	190	\$3,870
	MCD-H-36COSL-39	Cupboard Unit, Left, 36"W X 30"D X 39" H with open storage	204	\$3,924
Cupboard Unit With Open Storage (Cupboard Right)	Model Number	Description	Wgt.	List Price
	MCD-H-36COSR-29	Cupboard Unit, Right, 36"W X 30"D X 29" H with open storage	186	\$3,870
	MCD-H-36COSR-32	Cupboard Unit, Right, 36"W X 30"D X 32" H with open storage	190	\$3,870
	MCD-H-36COSR-39	Cupboard Unit, Right, 36"W X 30"D X 39" H with open storage	204	\$3,924
Open Storage Units	Model Number	Description	Wgt.	List Price
	MCD-H-36OS-29	Open Storage, 36"W X 30"D X 29" H	185	\$2,965
	MCD-H-36OS-32	Open Storage, 36"W X 30"D X 32" H	189	\$2,965
	MCD-H-36OS-39	Open Storage, 36"W X 30"D X 39" H	202	\$2,989
Open Storage Unit With Drawer	Model Number	Description	Wgt.	List Price
	MCD-H-36OSD-29	Open Storage, 36"W X 30"D X 29" H with drawer	200	\$3,638
	MCD-H-36OSD-32	Open Storage, 36"W X 30"D X 32" H with drawer	204	\$3,638
	MCD-H-36OSD-39	Open Storage, 36"W X 30"D X 39" H with drawer	218	\$3,671
Open Storage Unit With 2 & 3 Drawers (Open Storage Left)	Model Number	Description	Wgt.	List Price
	MCD-H-36OS2DL-29	Open Storage, Left, 36"W X 30"D X 29" H with 2 drawers, file/file	209	\$5,271
	MCD-H-36OS2DL-32	Open Storage, Left, 36"W X 30"D X 32" H with 2 drawers, file/file	212	\$5,271
	MCD-H-36OS3DL-32	Open Storage, Left, 36"W X 30"D X 32" H with 3 drawers, box/box/file	220	\$5,471
	MCD-H-36OS3DL-39	Open Storage, Left, 36"W X 30"D X 39" H with 3 drawers, box/file/file	240	\$5,709
Open Storage Unit With 2 & 3 Drawers (Open Storage Right)	Model Number	Description	Wgt.	List Price
	MCD-H-36OS2DR-29	Open Storage, Right, 36"W X 30"D X 29" H with 2 drawers, file/file	209	\$5,271
	MCD-H-36OS2DR-32	Open Storage, Right, 36"W X 30"D X 32" H with 2 drawers, file/file	212	\$5,271
	MCD-H-36OS3DR-32	Open Storage, Right, 36"W X 30"D X 32" H with 3 drawers, box/box/file	220	\$5,471
	MCD-H-36OS3DR-39	Open Storage, Right, 36"W X 30"D X 39" H with 3 drawers, box/file/file	240	\$5,709
Kneespace Unit	Model Number	Description	Wgt.	List Price
	MCD-H-36KS-32	Kneespace Unit, 36"W X 30"D X 32" H	138	\$3,424
	MCD-H-36KS-39	Kneespace Unit, 36"W X 30"D X 39" H	151	\$3,455
Corner Units 45 Degree Flat	Model Number	Description	Wgt.	List Price
	MCD-H-30FC45-29	Flat Corner, 30"W X 30"D X 29" H	74	\$3,191
	MCD-H-30FC45-32	Flat Corner, 30"W X 30"D X 32" H	77	\$3,191
	MCD-H-30FC45-39	Flat Corner, 30"W X 30"D X 39" H	84	\$3,499

* Note: For Triangle Corner Unit with Shelves, use Bookmark MCD-TCS units.

Prices and specifications subject to change without notice

P-HERITAGECIRCDKESKS-211028

Heritage

Circulation Desks

90 Degree Extended Flat	Model Number	Description	Wgt.	List Price
	MCD-H-30EFC-29	Flat Ext. Corner, 66"W X 30"D X 29" H	168	\$5,885
	MCD-H-30EFC-32	Flat Ext. Corner, 66"W X 30"D X 32" H	177	\$5,885
	MCD-H-30EFC-39	Flat Ext. Corner, 66"W X 30"D X 39" H	190	\$6,054

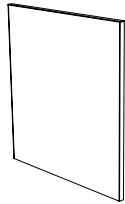
90 Degree Square	Model Number	Description	Wgt.	List Price
	MCD-H-30SC-29	Square Corner, 30"W X 30"D X 29" H	152	\$3,782
	MCD-H-30SC-32	Square Corner, 30"W X 30"D X 32" H	155	\$3,782
	MCD-H-30SC-39	Square Corner, 30"W X 30"D X 39" H	170	\$3,805

Triangle Corner Unit	Model Number	Description	Wgt.	List Price
	MCD-H-30TC-29	Triangle Corner, 30"W X 30"D X 29" H	88	\$2,977
	MCD-H-30TC-32	Triangle Corner, 30"W X 30"D X 32" H	91	\$2,977
	MCD-H-30TC-39	Triangle Corner, 30"W X 30"D X 39" H	98	\$3,134

* Note: For Triangle Corner Unit with Shelves, use Book-mark MCD-TCS units.

Circulation Desk End Panels

Note: One Terminating End Panel is required for each exposed end of a complete desk assembly. End Panels are available in all standard design lines. Terminating end panels are available to create right or left facing units. Right side and left side is determined from the perspective of the desk user.



Heritage	Model Number	Description	Wgt.	Price
	MCD-H-29EP-LH	Heritage Finished Left End Panel for 29"H Unit	19	\$695
	MCD-H-29EP-RH	Heritage Finished Right End Panel for 29"H Unit	19	\$695
	MCD-H-32EP-LH	Heritage Finished Left End Panel for 32"H Unit	20	\$695
	MCD-H-32EP-RH	Heritage Finished Right End Panel for 32"H Unit	20	\$695
	MCD-H-39EP-LH	Heritage Finished Left End Panel for 39"H Unit	24	\$794
	MCD-H-39EP-RH	Heritage Finished Right End Panel for 39"H Unit	24	\$794

Transactions Tops

Transaction Tops				
	MCD-H-36-TRX	Heritage Transaction Top 36"W X 7"H	19	\$708
	MCD-H-72-TRX	Heritage Transaction Top 72"W X 7"H	33	\$1,354
	MCD-H-30SC-TRX	Heritage Transaction Top Square Unit 9"D X 7"H	19	\$1,689
	MCD-H-30EFC-TRX	Heritage Transaction Top Extended Flat 9"D X 7"H	30	\$1,963

Mobile Pedestals	Model Number	Description	Wgt.	List Price
	WMP661222	6/6/12 X 22" D Mobile Pedestal, steel with steel fronts	42	\$877
	WMP121222	12/12 X 22" D Mobile Pedestal, steel with steel fronts	38	\$788
	WMP661222-SW	6/6/12 X 22" D Mobile Pedestal, steel with wood fronts	54	\$1,504
	WMP121222-SW	12/12 X 22" D Mobile Pedestal, steel with wood fronts	50	\$1,413
	WMP661222-W	6/6/12 X 22" D Mobile Pedestal, wood with wood fronts	66	\$1,504
	WMP121222-W	12/12 X 22" D Mobile Pedestal, wood with wood fronts	62	\$1,413



WKS Supporting Pedestals	Model Number	Description	Wgt.	List Price
	WP661222	6/6/12 X 22" D WKS Supporting Ped, steel with steel fronts	46	\$853
	WP121222	12/12 X 22" D WKS Supporting Ped, steel with steel fronts	42	\$783
	WP661222-SW	6/6/12 X 22" D WKS Supporting Ped, steel with wood fronts	58	\$1,358
	WP121222-SW	12/12 X 22" D WKS Supporting Ped, steel with wood fronts	62	\$1,291
	WP661222-W	6/6/12 X 22" D WKS Supporting Ped, wood with wood fronts	69	\$1,827
	WP121222-W	12/12 X 22" D WKS Supporting Ped, wood with wood fronts	65	\$1,466

