

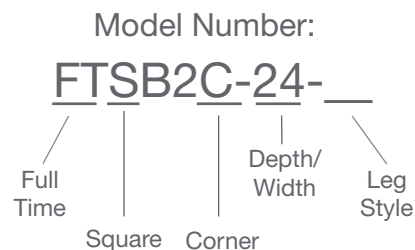
“How do I add finishes to...”

Full Time Halfback Square Corner

Select your desired Full Time Halfback Square Corner from the mediatechnologies Full Time Halfback Square Corner price sheet by model number.

Follow the Step-by-Step method to tell us how you want your Full Time Halfback unit finished. Make sure you indicate your finish choice for each step below in your purchase order. We will list your choices as notes below each individual model number in your order acknowledgement.

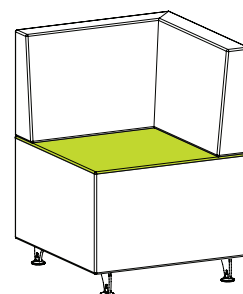
To the right is a simple explanation of a mediatechnologies Full Time Halfback Square Corner model number.



Step 1: Select fabric for seat top.

Choose from our selection of fabrics.
See our selection of fabric choices at
<https://www.mediatechnologies.com/resources/fabrics>

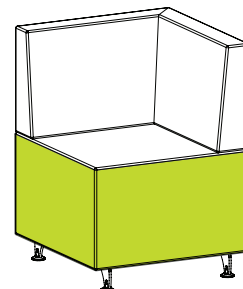
Enter your selection on the “Seat Top Fabric” line on the last page of this designator.



Step 2: Select fabric for seat sides / base.

Choose from our selection of fabrics.
See our selection of fabric choices at
<https://www.mediatechnologies.com/resources/fabrics>

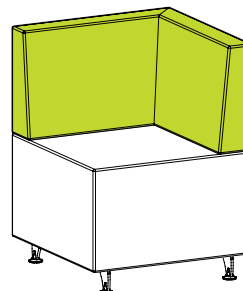
Enter your selection on the “Seat Sides/Base Fabric” line on the last page of this designator.



Step 3: Select fabric for seat back.

Choose from our selection of fabrics.
See our selection of fabric choices at
<https://www.mediatechnologies.com/resources/fabrics>

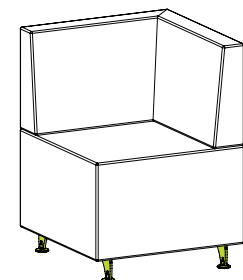
Enter your selection on the “Seat Back Fabric” line on the last page of this designator.



Step 4: Select leg style.

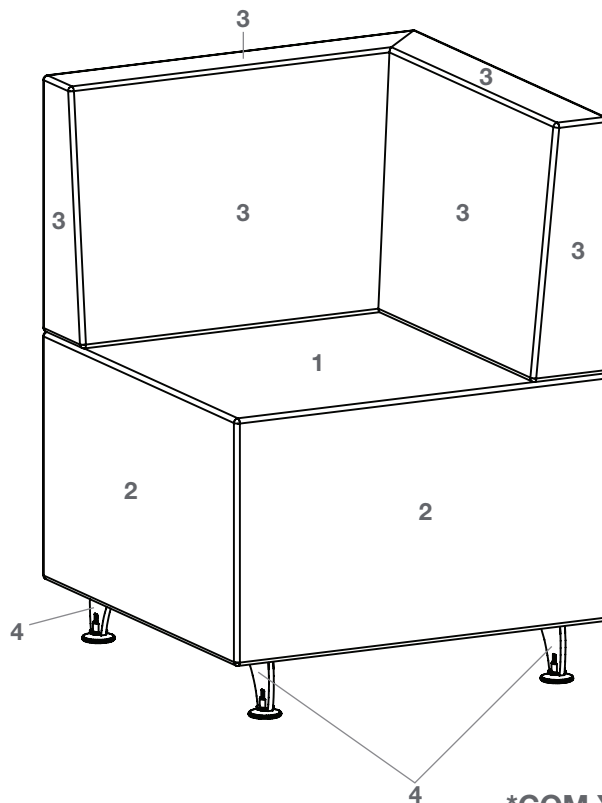
Choose from our selection of leg styles.
See our selection of leg styles on next page.

Enter your selection on the “Leg Style” line on the last page of this designator.



“How do I add finishes to...”

Full Time Half Back Square Corner



FTSB2C-24

***COM Yardage:**

FTSB2C-24

Back 1 yd, Base 1.5 yd

Job:

Model Number:

Fabric Schedule:

Upholstery note: fabric patterns that are horizontal may not line up with adjacent furniture due to the backs being curved and tapered.

1 Seat Top Fabric:

2 Seat Sides/Base Fabric:

3 Seat Back Fabric:

4 Leg Style: ☐ Casters ☐ Steel ☐ Wood Finish (if applicable):

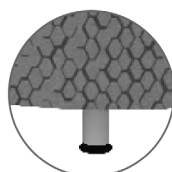
*COM yardage is based on single material. For multiple selections divide number of colors by total faces and factor up by 20%.



Caster



Oak post leg



Steel Post leg



Duo leg



Jr. Glides
16" H