

# RUBIX MOBILE STORAGE 72"W

Storage

## General Specifications

**Cabinet:** Are constructed with 3/4" thick engineered wood side panels, sub-tops, vertical dividers and shelves. Backs are constructed with 3/4" thick engineered wood. Cabinet finish material includes high-pressure laminate and melamine with PVC edges and wood veneer with wood edges. Worksurface tops receive a high-pressure laminate surface. Cabinets 72"H or taller do not receive a worksurface top

**Frame:** Steel frame is 11 gauge 1-1/4" square steel tubing. Frame assembly is attached to cabinet using wood screws. Mobile units use 75mm twin wheel locking casters that attach via threaded inserts on underside of the steel frame assembly. Freestanding steel support legs and mobile casters use the same threaded inserts and are interchangeable. Legs are available upon request.

Features of various cabinet configurations includes:

- Concealed door hinges and a variety of pulls available.
- Full extension drawers.

**Finish:** Standard powder coat on all metal parts is black; other colors may be specified. See **mediatechnologies®** Finish and Color Guide for choices.



**Cupboard with Open Storage (CSOS)**

Model Number	Description	Wgt.	List Price
<b>18" Depth</b>			
CSOS7229-18	72"W x 18"D x 29"H		1915
CSOS7236-18	72"W x 18"D x 36"H	271	2063
<b>24" Depth</b>			
CSOS7229-24	72"W x 24"D x 29"H		2024
CSOS7236-24	72"W x 24"D x 36"H	280	2064



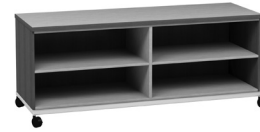
**Cupboard with 2 Lateral File Storage Drawers (CS2FSL)**

Model Number	Description	Wgt.	List Price
<b>18" Depth</b>			
CS2FSL7236-18	72"W x 18"D x 36"H		2251
<b>24" Depth</b>			
CS2FSL7236-24	72"W x 24"D x 36"H		2309



**Cupboard Storage (CS)**

Model Number	Description	Wgt.	List Price
<b>18" Depth</b>			
CS7229-18	72"W x 18"D x 29"H	241	2040
CS7236-18	72"W x 18"D x 36"H	287	2220
<b>24" Depth</b>			
CS7229-24	72"W x 24"D x 29"H	248	2148
CS7236-24	72"W x 24"D x 36"H	295	2354



**Open Storage (OS)**

Model Number	Description	Wgt.	List Price
<b>18" Depth</b>			
OS7229-18	72"W x 18"D x 29"H		1660
OS7236-18	72"W x 18"D x 36"H	261	1768
<b>24" Depth</b>			
OS7229-24	72"W x 24"D x 29"H		1768
OS7236-24	72"W x 24"D x 36"H	268	1904



**Cupboard with Deep Box Drawer & Lateral File Storage (CSDFSL)**

Model Number	Description	Wgt.	List Price
<b>18" Depth</b>			
CSDFSL7229-18	72"W x 18"D x 29"H	253	2143
<b>24" Depth</b>			
CSDFSL7229-24	72"W x 24"D x 29"H	260	2251



**Open Storage Alternate Shelves (OSA)**

Model Number	Description	Wgt.	List Price
<b>18" Depth</b>			
OSA7229-18	72"W x 18"D x 29"H		1660
OSA7236-18	72"W x 18"D x 36"H	261	1768
<b>24" Depth</b>			
OSA7229-24	72"W x 24"D x 29"H		1768
OSA7236-24	72"W x 24"D x 36"H	268	1904

PLEASE NOTE: The prices shown are for reference only and are base models constructed of HPL work surfaces, TFL cabinets and doors with standard pulls, standard hinges and without locks. For detailed pricing please contact your local dealer or mediatechnologies®.