

SISI

Booth Seating



SISS-C2260-LL

22.25"D X 61.5"W X 35.5"H, 18"H SEAT

SISI



SISS-C2260LL
(Front View)



SISS-C2260-LL
(Rear View)



SISD-C4473-LL

SISI

- Fiberglass booth seating.
- Durable, simple and designed for cleanability.
- Available in a variety of colors.
- Frame assembly is fabricated of square powder coated steel tubing.
- Black nylon leveling glides.
- High-pressure laminate back panel with PVC edgeband and vinyl welt.

Fiberglass Color Group I (standard colors)



Dove Gray



Silver



Executive Blue

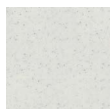


Lime Green

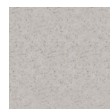


Macintosh Red

Fiberglass Color Group II (will incur an upcharge)



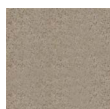
Snow



Ecru



Fashion Gray



Sand



Ocean

To Order, Choose Finish Selections & Options

Seat: Choose from our selection of fiberglass options.

Back Panel: Choose from our selection of high pressure laminates.

Panel Edges: Choose a PVC edgeband.

Vinyl Welt: Choose a vinyl or polyurethane for your welt.

Steel Base: Choose from our selection of powder coats.

See **mediatechnologies'** Finish and Color Guide and Fabric pages for options at www.mediatechnologies.com.

SISI STANDARD SIZES

MODEL	OVERALL DEPTH"	OVERALL WIDTH"	OVERALL HEIGHT"	SEAT HEIGHT"
SISS-C2224-LL	23.313	25.5	35.5	18
SISS-C2242-LL	23.313	43.5	35.5	18
SISS-C2248-LL	23.313	49.5	35.5	18
SISS-C2260-LL	23.313	61.5	35.5	18
SISS-C2273-LL	23.313	74.5	35.5	18
SISD-C4424-LL	43.875	25.5	35.5	18
SISD-C4442-LL	43.875	43.5	35.5	18
SISD-C4448-LL	43.875	49.5	35.5	18
SISD-C4460-LL	43.875	61.5	35.5	18
SISD-C4473-LL	43.875	74.5	35.5	18

General Specifications

Formed fiberglass bench. High-pressure laminate back with 3mm PVC edgeband. Vinyl welt in-between fiberglass and HPL back. Free-standing bench is mounted on square powder coated tubular steel frame with tubular steel legs. Each leg is fitted with a nylon leveling glide.



sisi-cs-190430

892 Industrial Park Drive
Shelby, MI 49455
P: 231.861.2194
F: 231.861.6678
www.mediatechnologies.com
sales@mediatechnologies.com

PURE MICHIGAN®