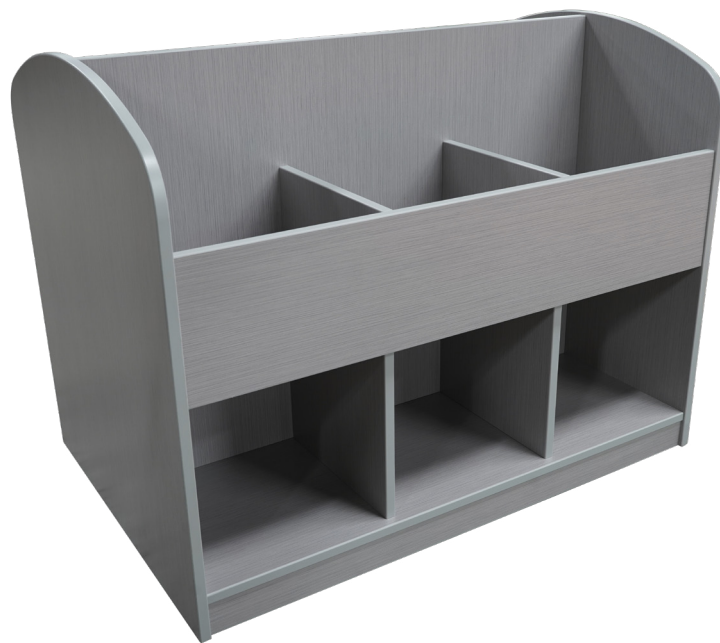


STORAGE CUBBIES & BROWSER BIN

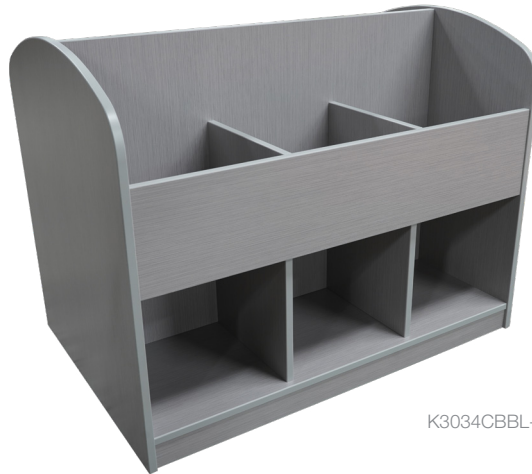
Display



K3034CBBL-44-MOB

30"D x 44"W x 34"H

STORAGE CUBBIES & BROWSER BIN



K3034CBBL-44-MOB

STORAGE CUBBIES & BROWSER BIN

- Features arched-top end panels.
- Twelve individual cubbies.
- Case is constructed of high pressure laminate.
- Edges are 3mm PVC.
- Equipped with high pressure laminate toekicks.

To Order, Choose Finish Selections & Options

Case/Panels: Choose from our selection of high pressure laminates.

Edges: Choose from our selection of PVC edges.

See **mediatechnologies'** finish selections at <https://www.mediatechnologies.com/resources/finishes>

STORAGE CUBBIES & BROWSER BIN STANDARD SIZES

MODEL	DEPTH"	WIDTH"	HEIGHT"
K3034CBBL-44-MOB	30	44	34

General Specifications

Case: The 30" deep, 34-18" high arched-top end panels are 11/16" thick particleboard core with grade .050 high pressure laminate face, .030 phenolic backer and 3mm PVC edge banding.

Shelf: Bottom shelf is 11/16" particleboard core with .050" high pressure laminate face, .030" phenolic backer.

Panels: Back panel and face panels are 11/16" particleboard core with .050" high pressure laminate.

Toe Kicks: Toe kicks are constructed of 2-1/2" high 11/16" particle board core with .050" high pressure laminate faces and .030" phenolic backer.

Casters: Concealed 2" diameter casters are bolted to a steel chassis that fits inside the toe.



cs-storagecubbies-browserbin-200430

892 Industrial Park Drive
Shelby, MI 49455
P: 231.861.2194
F: 231.861.6678
www.mediatechnologies.com
sales@mediatechnologies.com

PURE *M*ICHIGAN®