

End Panel Display

Display

General Specifications

Wood Veneer End Panel Display:

Top, Back & End Panels: are 1" thick particle board panels with two wood veneer faces all balanced with 3mm Hardwood banding on exposed edges. Panels are connected using glue & dowel construction.

Wood Shelves: 1" thick particle board panels with two wood veneer faces all balanced with 3mm hardwood banding on front edge. ½" x ½" Hardwood nose panel is fastened to the shelf as a book stop. Shelves are bored to receive (5) cams. Shelves are connected to end panels via a cam & cam stud connection.

Toes: are constructed of 4" high 1" thick particle board panels with two wood veneer faces and are attached using glue & dowel construction.

High Pressure Laminate End Panel Display:

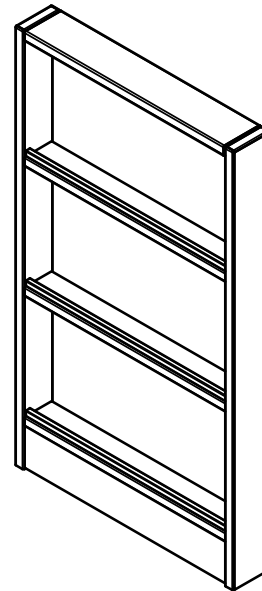
Top, Back & End Panels: are 1" thick particle board panels with two faces laminated with .030" thick High Pressure Laminate, all balanced with 3mm PVC on front edge. ½" x ½" Hardwood nose panel is fastened to the shelf as a bookstop. Shelves are bored to receive (5) cams. Shelves are connected to end panels via a cam & cam stud connection.

Laminate Shelves: 1" thick particle board panels with two faces laminated with .030" thick High Pressure Laminate, all balanced with 3mm PVC on front edge. ½" x ½" Hardwood nose panel is fastened to the shelf as a bookstop. Shelves are bored to receive (5) cams. Shelves are connected to end panels via a cam & cam stud connection.

Toes: are constructed of 4" high 1" thick particle board panels with two faces laminated with .030" thick High Pressure Laminate and are attached using glue & dowel construction.

Installation: To install display assembly you must remove the shelves via the cams on the bottom side of the shelf. Once shelf is removed use #8 x 1-1/2" FH Screw to secure to the End Panel of your shelving run. Replace shelves and fasten using the cams to conceal the mounting screws.

*Install Display Panel Assembly to the shelving end panel before assembling shelving or accessing the Rafix cams on the bottom display shelf will be difficult.



End Panel Display			
Model Number	Description	Wgt.	List Price
High-Pressure Laminate			
DISPL-4724	4"D X 24"W X 47"H		\$1,652
DISPL-4124	4"D X 24"W X 41"H		\$1,652
Oak Veneer			
DISPO-4724	4"D X 24"W X 47"H		\$1,652
DISPO-4124	4"D X 24"W X 41"H		\$1,652
Maple Veneer			
DISPM-4724	4"D X 24"W X 47"H		\$1,652
DISPM-4124	4"D X 24"W X 41"H		\$1,652

Set Up Charges and Upcharges for Non-Standard and Custom Finishes		
Model Number	Description	List Price
Non-Standard PVC	Upcharge, per color, per order, for non-standard PVC	\$911
Custom Finish	Upcharge for custom stain finish	\$640
Non-Standard Stain	Upcharge for non-standard stains already matched	\$283
Sprayon Finish	Upcharge, per color, per order, for Sprayon finish	\$329

Required to order: Model # including options if applicable

- HPL Selection, if applicable
- PVC Selection, if applicable
- Wood finish selection, if applicable
- Wood edge selection, if applicable

Note: Prices for items with wood veneer or edges is based on oak. Use of maple or other species may incur an upcharge.