

# Modular Circulations Desks

## General Specifications - Circulation Desks

**Modular Case System:** Each case module is fully assembled, allowing for simple field assembly of the complete circulation desk as well as for easy reconfiguration, if necessary. Cases connect with male/female threaded metal connectors.

**Top:** Tops are 1-1/4" thick, three ply engineered wood construction with .050" High pressure laminate, HPL, and a phenolic backer sheet. The patron side is edged with 5/16" x 1-1/4" solid red oak (with the exception on the Malibu and Keystone design have 1-5/8") with a 1/4" radius top and bottom. The edges and back side of the top are edged with 1/8" solid red oak.

**Case Construction:** Circulation desk modules are constructed of 3/4" thick, three ply particleboard with plain sliced "A" grade oak veneer. All modules, except Malibu style, utilize a continuous front design (sides do not penetrate), with a 4" High recessed toe. Cabinets are assembled using glue and dowel joinery. Note: One Terminating End Panel is required for each exposed end of a complete desk assembly.

**Adjustable Shelves:** Adjustable shelves are 3/4" thick three ply particleboard plywood with "A" grade oak veneer faces. The exposed edges are edged with 1/8" solid red oak. Shelves are adjustable on 32mm increments.

**Drawers:** Drawers are constructed of 1/2" nine ply baltic birch plywood. Drawers have 3/4" thick fronts with "A" grade oak veneer. Box drawers have 100 lb. full extension slides, file drawers have 100 lb. full extension slides.

**Doors:** Doors are constructed of 3/4" thick, three ply particleboard with plain sliced "A" grade oak veneer faces and edged on all sides with 1/8" solid red oak. Door hardware includes concealed hinges, fully adjustable in all 3 axes, and wire pulls.

**Continuous Top Construction:** Tops may be specified as continuous.

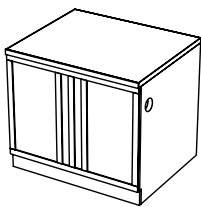
**Locks:** Units may be specified with doors and or drawers locking, keyed random or alike.

**Design Lines:** mediatechnologies® offers seven design lines of circulation desk modules, all using the general construction specifications above.

To specify a design line you must include a letter indicator: No letter indicator will specify our standard Bookmark design.

**M**-Metro      **L**-Lexington      **H**-Heritage      **MB**-Malibu  
**CL**-Charleston      **KS**-Keystone

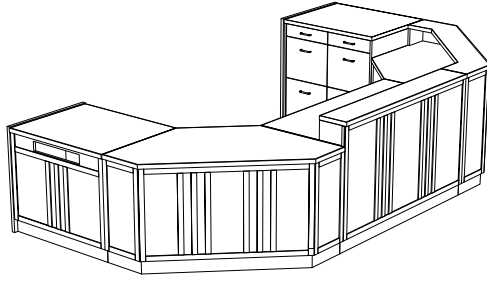
Please see below for design descriptions



**Heritage:** a mission style design line, also using solid oak details applied to the patron side of most modular units. Model Number example for Heritage Desk unit; MCD-H-36D-29

# Heritage

## Circulation Desks



### Desk Units

#### 36" Wide

Model Number	Description	Wgt.	List Price
MCD-H-36D-29	Desk Unit, 36"W X 30"D X 29" H	120	\$2,564
MCD-H-36D-32	Desk Unit, 36"W X 30"D X 32" H	126	\$2,564
MCD-H-36D-39	Desk Unit, 36"W X 30"D X 39" H	141	\$2,725
MCD-H-36D-32-ADJ	Desk Unit, 36"W X 30"D X ADJ. H	126	\$2,791

#### 48" Wide

Model Number	Description	Wgt.	List Price
MCD-H-48D-29	Desk Unit, 48"W X 30"D X 29" H	131	\$3,417
MCD-H-48D-32	Desk Unit, 48"W X 30"D X 32" H	138	\$3,417
MCD-H-48D-39	Desk Unit, 48"W X 30"D X 39" H	153	\$3,627
MCD-H-48D-32-ADJ	Desk Unit, 48"W X 30"D X ADJ. H	138	\$3,723

#### 72" Wide

Model Number	Description	Wgt.	List Price
MCD-H-72D-29	Desk Unit, 72"W X 30"D X 29" H	206	\$5,209
MCD-H-72D-32	Desk Unit, 72"W X 30"D X 32" H	212	\$5,209
MCD-H-72D-39	Desk Unit, 72"W X 30"D X 39" H	230	\$5,236
MCD-H-72D-32-ADJ	Desk Unit, 72"W X 30"D X ADJ. H	212	\$5,678

### Book Return

Model Number	Description	Wgt.	List Price
MCD-H-36BR-29	Book Return, 36"W X 30"D X 29" H	118	\$2,746
MCD-H-36BR-32	Book Return, 36"W X 30"D X 32" H	124	\$2,746
MCD-H-36BR-39	Book Return, 36"W X 30"D X 39" H	139	\$2,913

### Descending Platform Book Truck

Model Number	Description	Wgt.	List Price
MCD-DBT-1824-21	Depressible Platform Book Truck, 18"D x 24.25"W x 21"H, For curved 29"H Book Return Units and Nomad Book Return	135	\$2,982
MCD-DBT-1824-24	Depressible Platform Book Truck, 18"D x 24.25"W x 24"H, For Curved 32"-39"H Book Return Units	135	\$2,982
MCD-DBT-2424-21	Depressible Platform Book Truck, 23.625"D x 24.25"W x 21"H, For 29"H Book Return Units with Extended Chutes and 32"H Keystone and Malibu Book Returns	137	\$2,982
MCD-DBT-2424-24	Depressible Platform Book Truck, 23.625"D x 24.25"W x 24"H, For 32" and #("H Book Return Units	137	\$2,982

### Top Surface Slot Book Return Module with Drawer and Shelf Storage

Model Number	Description	Wgt.	List Price
MCD-H-36SBR-TOP-29	Book Return w Top Slot, 36"W X 30"D X 29" H	200	\$3,966
MCD-H-36SBR-TOP-32	Book Return w Top Slot, 36"W X 30"D X 32" H	204	\$3,966
MCD-H-36SBR-TOP-39	Book Return w Top Slot, 36"W X 30"D X 39" H	218	\$4,000

# Heritage

## Circulation Desks

Cupboard Units	Model Number	Description	Wgt.	List Price
	MCD-H-36CS-29	Cupboard Unit, 36"W X 30"D X 29" H	189	\$3,890
	MCD-H-36CS-32	Cupboard Unit, 36"W X 30"D X 32" H	192	\$3,890
	MCD-H-36CS-39	Cupboard Unit, 36"W X 30"D X 39" H	210	\$3,933
Cupboard Unit With Drawer	Model Number	Description	Wgt.	List Price
	MCD-H-36CD-29	Cupboard Unit, 36"W X 30"D X 29" H with drawer	201	\$4,474
	MCD-H-36CD-32	Cupboard Unit, 36"W X 30"D X 32" H with drawer	207	\$4,474
	MCD-H-36CD-39	Cupboard Unit, 36"W X 30"D X 39" H with drawer	225	\$4,512
Cupboard Unit With 2 & 3 Drawers (Cupboard Left)	Model Number	Description	Wgt.	List Price
	MCD-H-36C2DL-29	Cupboard Unit, Left, 36"W X 30"D X 29" H with 2 drawers, file/file	222	\$5,724
	MCD-H-36C2DL-32	Cupboard Unit, Left, 36"W X 30"D X 32" H with 2 drawers, file/file	225	\$5,724
	MCD-H-36C3DL-32	Cupboard Unit, Left, 36"W X 30"D X 32" H with 3 drawers, box/box/file	230	\$5,937
	MCD-H-36C3DL-39	Cupboard Unit, Left, 36"W X 30"D X 39" H with 3 drawers, box/file/file	256	\$5,994
				\$0
Cupboard Unit With 2 & 3 Drawers (Cupboard Right)	Model Number	Description	Wgt.	List Price
	MCD-H-36C2DR-29	Cupboard Unit, Right, 36"W X 30"D X 29" H with 2 drawers, file/file	222	\$5,724
	MCD-H-36C2DR-32	Cupboard Unit, Right, 36"W X 30"D X 32" H with 2 drawers, file/file	225	\$5,724
	MCD-H-36C3DR-32	Cupboard Unit, Right, 36"W X 30"D X 32" H with 3 drawers, box/box/file	230	\$5,937
	MCD-H-36C3DR-39	Cupboard Unit, Right, 36"W X 30"D X 39" H with 3 drawers, box/file/file	256	\$5,994
Cupboard Unit With Open Storage (Cupboard Left)	Model Number	Description	Wgt.	List Price
	MCD-H-36COSL-29	Cupboard Unit, Left, 36"W X 30"D X 29" H with open storage	186	\$4,074
	MCD-H-36COSL-32	Cupboard Unit, Left, 36"W X 30"D X 32" H with open storage	190	\$4,074
	MCD-H-36COSL-39	Cupboard Unit, Left, 36"W X 30"D X 39" H with open storage	204	\$4,131
Cupboard Unit With Open Storage (Cupboard Right)	Model Number	Description	Wgt.	List Price
	MCD-H-36COSR-29	Cupboard Unit, Right, 36"W X 30"D X 29" H with open storage	186	\$4,074
	MCD-H-36COSR-32	Cupboard Unit, Right, 36"W X 30"D X 32" H with open storage	190	\$4,074
	MCD-H-36COSR-39	Cupboard Unit, Right, 36"W X 30"D X 39" H with open storage	204	\$4,131
Open Storage Units	Model Number	Description	Wgt.	List Price
	MCD-H-36OS-29	Open Storage, 36"W X 30"D X 29" H	185	\$3,122
	MCD-H-36OS-32	Open Storage, 36"W X 30"D X 32" H	189	\$3,122
	MCD-H-36OS-39	Open Storage, 36"W X 30"D X 39" H	202	\$3,147
Open Storage Unit With Drawer	Model Number	Description	Wgt.	List Price
	MCD-H-36OSD-29	Open Storage, 36"W X 30"D X 29" H with drawer	200	\$3,830
	MCD-H-36OSD-32	Open Storage, 36"W X 30"D X 32" H with drawer	204	\$3,830
	MCD-H-36OSD-39	Open Storage, 36"W X 30"D X 39" H with drawer	218	\$3,865

\* Note: For Triangle Corner Unit with Shelves, use Bookmark MCD-TCS units.

Prices and specifications subject to change without notice

P-HERITAGECIRCDSESKS-220525

# Heritage

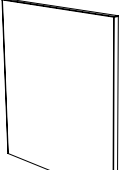
## Circulation Desks

Open Storage Unit With 2 & 3 Drawers (Open Storage Left)	Model Number	Description	Wgt.	List Price
	MCD-H-360S2DL-29	Open Storage, Left, 36"W X 30"D X 29" H with 2 drawers, file/file	209	\$5,549
	MCD-H-360S2DL-32	Open Storage, Left, 36"W X 30"D X 32" H with 2 drawers, file/file	212	\$5,549
	MCD-H-360S3DL-32	Open Storage, Left, 36"W X 30"D X 32" H with 3 drawers, box/box/file	220	\$5,759
	MCD-H-360S3DL-39	Open Storage, Left, 36"W X 30"D X 39" H with 3 drawers, box/file/file	240	\$6,010
Open Storage Unit With 2 & 3 Drawers (Open Storage Right)	Model Number	Description	Wgt.	List Price
	MCD-H-360S2DR-29	Open Storage, Right, 36"W X 30"D X 29" H with 2 drawers, file/file	209	\$5,549
	MCD-H-360S2DR-32	Open Storage, Right, 36"W X 30"D X 32" H with 2 drawers, file/file	212	\$5,549
	MCD-H-360S3DR-32	Open Storage, Right, 36"W X 30"D X 32" H with 3 drawers, box/box/file	220	\$5,759
	MCD-H-360S3DR-39	Open Storage, Right, 36"W X 30"D X 39" H with 3 drawers, box/file/file	240	\$6,010
Kneespace Unit	Model Number	Description	Wgt.	List Price
	MCD-H-36KS-32	Kneespace Unit, 36"W X 30"D X 32" H	138	\$3,605
	MCD-H-36KS-39	Kneespace Unit, 36"W X 30"D X 39" H	151	\$3,637
Corner Units	Model Number	Description	Wgt.	List Price
45 Degree Flat	Model Number	Description	Wgt.	List Price
	MCD-H-30FC45-29	Flat Corner, 30"W X 30"D X 29" H	74	\$3,359
	MCD-H-30FC45-32	Flat Corner, 30"W X 30"D X 32" H	77	\$3,359
	MCD-H-30FC45-39	Flat Corner, 30"W X 30"D X 39" H	84	\$3,684
90 Degree Extended Flat	Model Number	Description	Wgt.	List Price
	MCD-H-30EFC-29	Flat Ext. Corner, 66"W X 30"D X 29" H	168	\$6,195
	MCD-H-30EFC-32	Flat Ext. Corner, 66"W X 30"D X 32" H	177	\$6,195
	MCD-H-30EFC-39	Flat Ext. Corner, 66"W X 30"D X 39" H	190	\$6,373
90 Degree Square	Model Number	Description	Wgt.	List Price
	MCD-H-30SC-29	Square Corner, 30"W X 30"D X 29" H	152	\$3,982
	MCD-H-30SC-32	Square Corner, 30"W X 30"D X 32" H	155	\$3,982
	MCD-H-30SC-39	Square Corner, 30"W X 30"D X 39" H	170	\$4,006
Triangle Corner Unit	Model Number	Description	Wgt.	List Price
	MCD-H-30TC-29	Triangle Corner, 30"W X 30"D X 29" H	88	\$3,134
	MCD-H-30TC-32	Triangle Corner, 30"W X 30"D X 32" H	91	\$3,134
	MCD-H-30TC-39	Triangle Corner, 30"W X 30"D X 39" H	98	\$3,299

\* Note: For Triangle Corner Unit with Shelves, use Bookmark MCD-TCS units.


# Circulation Desk End Panels

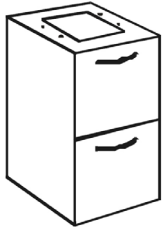
Note: One Terminating End Panel is required for each exposed end of a complete desk assembly. End Panels are available in all standard design lines. Terminating end panels are available to create right or left facing units. Right side and left side is determined from the perspective of the desk user.

Heritage	Model Number	Description	Wgt.	Price
	MCD-H-29EP-LH	Heritage Finished Left End Panel for 29"H Unit	19	\$732
	MCD-H-29EP-RH	Heritage Finished Right End Panel for 29"H Unit	19	\$732
	MCD-H-32EP-LH	Heritage Finished Left End Panel for 32"H Unit	20	\$732
	MCD-H-32EP-RH	Heritage Finished Right End Panel for 32"H Unit	20	\$732
	MCD-H-39EP-LH	Heritage Finished Left End Panel for 39"H Unit	24	\$836
	MCD-H-39EP-RH	Heritage Finished RightEnd Panel for 39"H Unit	24	\$836

## Transactions Tops

Transaction Tops				
	MCD-H-36-TRX	Heritage Transaction Top 36"W X 7"H	19	\$708
	MCD-H-72-TRX	Heritage Transaction Top 72"W X 7"H	33	\$1354
	MCD-H-30SC-TRX	Heritage Transaction Top Square Unit 9"D X 7"H	19	\$1689
	MCD-H-30EFC-TRX	Heritage Transaction Top Extended Flat 9"D X 7"H	30	\$1963

Mobile Pedestals	Model Number	Description	Wgt.	List Price
	WMP661222	6/6/12 X 22" D Mobile Pedestal, steel with steel fronts	42	\$924
	WMP121222	12/12 X 22" D Mobile Pedestal, steel with steel fronts	38	\$830
	WMP661222-SW	6/6/12 X 22" D Mobile Pedestal, steel with wood fronts	54	\$1,584
	WMP121222-SW	12/12 X 22" D Mobile Pedestal, steel with wood fronts	50	\$1,488
	WMP661222-W	6/6/12 X 22" D Mobile Pedestal, wood with wood fronts	66	\$1,584
	WMP121222-W	12/12 X 22" D Mobile Pedestal, wood with wood fronts	62	\$1,488

WKS Supporting Pedestals	Model Number	Description	Wgt.	List Price
	WP661222	6/6/12 X 22" D WKS Supporting Ped, steel with steel fronts	46	\$898
	WP121222	12/12 X 22" D WKS Supporting Ped, steel with steel fronts	42	\$825
	WP661222-SW	6/6/12 X 22" D WKS Supporting Ped, steel with wood fronts	58	\$1,430
	WP121222-SW	12/12 X 22" D WKS Supporting Ped, steel with wood fronts	62	\$1,359
	WP661222-W	6/6/12 X 22" D WKS Supporting Ped, wood with wood fronts	69	\$1,924
	WP121222-W	12/12 X 22" D WKS Supporting Ped, wood with wood fronts	65	\$1,544