

General Specifications

Back Panel: Back panel is 3/4" thick melamine or high pressure laminate.

End Panels: End Panels are 1" thick melamine or high pressure laminate and are banded with 3mm PVC on all edges.

Top: Top consists of the main top and a sub-top for rigidity. Main top is 3/4" melamine or high pressure laminate. Edges are banded with 3mm PVC on all sides.

Base Assembly: Fully Upholstered Base is constructed of 18mm plywood frame with a 2" thick high density upholstery foam seat cushion. The base is fully upholstered. The base assembly sits on 4 self-leveling glides.

Tapered Side Cushions: Sides cushions are 2360 upholstery foam constructed on an 11/16 particle board core. The thickness of each side cushion is tapered from 3" thick at the top to 12" thick at the base. Each tapered side cushion is attached to the unit with high strength hook and loop fasteners.

Required to order:

Model # including:

- Laminate OR melamine selection
- PVC selection
- Fabric selection
- Optional Duet connectivity panel, if desired.



Nest is shown with optional Duet connectivity panel mounted in base.

Nest, Closed Back, Privacy Cove, Fully Upholstered Base, Melamine Construction														
Model Number	O.A. Depth"	O.A. Width"	O.A. Height"	Weight lbs	COM Ydg	COM Grade 1	Grade 2	Grade 3	Grade 4	Grade 5	Grade 6	Grade 7	Grade 8	Grade 9
NST-C2048T-54-	20	48	54		3	\$4,525	\$4,706	\$4,894	\$5,041	\$5,193	\$5,349	\$5,511	\$5,675	\$5,847
NST-C2048T-72-	20	48	72		4	\$4,686	\$4,875	\$5,071	\$5,224	\$5,381	\$5,541	\$5,711	\$5,882	\$6,059
NST-C2048T-84-	20	48	84		4	\$4,886	\$5,082	\$5,285	\$5,445	\$5,610	\$5,779	\$5,953	\$6,133	\$6,316
NST-C2060T-54-	20	60	54		3.5	\$5,366	\$5,581	\$5,806	\$5,979	\$6,159	\$6,345	\$6,536	\$6,733	\$6,936
NST-C2060T-72-	20	60	72		4.5	\$5,599	\$5,823	\$6,057	\$6,239	\$6,427	\$6,619	\$6,819	\$7,025	\$7,236
NST-C2060T-84-	20	60	84		4.5	\$5,830	\$6,065	\$6,308	\$6,497	\$6,693	\$6,894	\$7,102	\$7,315	\$7,535
NST-C2448T-54-	24	48	54		3.5	\$5,028	\$5,229	\$5,437	\$5,602	\$5,768	\$5,943	\$6,122	\$6,307	\$6,496
NST-C2448T-72-	24	48	72		4.5	\$5,207	\$5,415	\$5,632	\$5,803	\$5,975	\$6,156	\$6,342	\$6,532	\$6,729
NST-C2448T-84-	24	48	84		4.5	\$5,429	\$5,646	\$5,872	\$6,049	\$6,233	\$6,419	\$6,612	\$6,811	\$7,015
NST-C2460T-54-	24	60	54		4	\$5,962	\$6,200	\$6,448	\$6,642	\$6,842	\$7,048	\$7,260	\$7,477	\$7,703
NST-C2460T-72-	24	60	72		4.5	\$6,219	\$6,469	\$6,728	\$6,930	\$7,138	\$7,353	\$7,572	\$7,800	\$8,035
NST-C2460T-84-	24	60	84		4.5	\$6,478	\$6,737	\$7,008	\$7,218	\$7,433	\$7,658	\$7,888	\$8,124	\$8,369
Nest, Closed Back, Privacy Cove, Fully Upholstered Base, HPL Construction														
NST-C2048L-54-	20	48	54		3	\$5,028	\$5,229	\$5,437	\$5,602	\$5,768	\$5,943	\$6,122	\$6,307	\$6,496
NST-C2048L-72-	20	48	72		4	\$5,207	\$5,415	\$5,632	\$5,803	\$5,975	\$6,156	\$6,342	\$6,532	\$6,729
NST-C2048L-84-	20	48	84		4	\$5,429	\$5,646	\$5,872	\$6,049	\$6,233	\$6,419	\$6,612	\$6,811	\$7,015
NST-C2060L-54-	20	60	54		3.5	\$5,962	\$6,200	\$6,448	\$6,642	\$6,842	\$7,048	\$7,260	\$7,477	\$7,703
NST-C2060L-72-	20	60	72		4.5	\$6,219	\$6,469	\$6,728	\$6,930	\$7,138	\$7,353	\$7,572	\$7,800	\$8,035
NST-C2060L-84-	20	60	84		4.5	\$6,478	\$6,737	\$7,008	\$7,218	\$7,433	\$7,658	\$7,888	\$8,124	\$8,369
NST-C2448L-54-	24	48	54		3.5	\$5,583	\$5,808	\$6,041	\$6,222	\$6,410	\$6,602	\$6,802	\$7,007	\$7,216
NST-C2448L-72-	24	48	72		4.5	\$5,784	\$6,016	\$6,258	\$6,446	\$6,640	\$6,840	\$7,046	\$7,258	\$7,474
NST-C2448L-84-	24	48	84		4.5	\$6,031	\$6,270	\$6,524	\$6,719	\$6,921	\$7,129	\$7,344	\$7,563	\$7,792
NST-C2460L-54-	24	60	54		4	\$6,622	\$6,889	\$7,165	\$7,381	\$7,603	\$7,832	\$8,066	\$8,308	\$8,559
NST-C2460L-72-	24	60	72		4.5	\$6,911	\$7,186	\$7,473	\$7,698	\$7,931	\$8,169	\$8,414	\$8,667	\$8,927
NST-C2460L-84-	24	60	84		4.5	\$7,197	\$7,496	\$7,820	\$8,063	\$8,316	\$8,571	\$8,837	\$9,112	\$9,393

Duet Power Option	Description	LIST
ADUF-1P2U-72-__	1 AC receptacle, Dual USB port, 72" cord, Select (B) Black, (S) Silver or (W) White Plate	\$364
ADUF-1P2U-120-__	1 AC receptacle, Dual USB port, 120" cord, Select (B) Black, (S) Silver or (W) White Plate	\$372

General Specifications

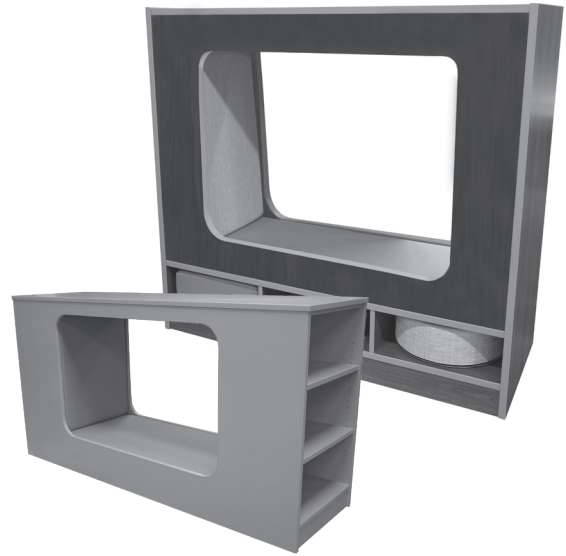
Front & Back Panel: Panels are 3/4" thick melamine or high pressure laminate with PVC-banded cutout.

End Panels: End Panels are 1" thick melamine or high pressure laminate and are banded with 3mm PVC on all edges.

Top: Top consists of the 1" thick melamine or high pressure laminate main top and a sub-top for rigidity. Edges are banded with 3mm PVC on all sides.

Storage Base Assembly: Base includes a 4" toe assembly and three 18" wide and 6-3/4"H storage spaces. The storage space is defined by a 1" thick melamine or high pressure laminate top and bottom with 3/4" thick melamine or high pressure laminate dividers between the storage spaces. All edges are banded with 3mm PVC.

Seat and Tapered Side Cushions: Seat cushion is 1-1/2" firm upholstery foam on a 3/4" particle board core. Side cushions are 2360 upholstery foam constructed on an 3/4" particle board core. Each side cushion is 21-5/8" wide and 40" high. The thickness of each side cushion is tapered from 3" thick at the top to 6-1/8" thick at the base. Each tapered side cushion is attached to the unit with high strength hook and loop fasteners.



Nest, Open, Privacy Cove, Open Storage Base, Melamine Construction														
Model Number	O.A. Depth"	O.A. Width"	O.A. Height"	Weight lbs	COM Ydg	COM Grade 1	Grade 2	Grade 3	Grade 4	Grade 5	Grade 6	Grade 7	Grade 8	Grade 9
NSTO-OS-2048T-54-	20	48	54		2.5	\$4,440	\$4,624	\$4,768	\$4,916	\$5,069	\$5,225	\$5,387	\$5,555	\$5,724
NSTO-OS-2060T-54-	20	60	54		3	\$4,823	\$5,027	\$5,182	\$5,342	\$5,509	\$5,678	\$5,854	\$6,037	\$6,222
NSTO-OS-2448T-54-	24	48	54		2.5	\$4,823	\$5,027	\$5,182	\$5,342	\$5,509	\$5,678	\$5,854	\$6,037	\$6,222
NSTO-OS-2460T-54-	24	60	54		3	\$5,241	\$5,462	\$5,631	\$5,806	\$5,987	\$6,172	\$6,364	\$6,561	\$6,764

Nest, Open, Privacy Cove, Open Storage Base, HPL Construction														
NSTO-OS-2048L-54-	20	48	54		2.5	\$4,849	\$5,053	\$5,211	\$5,371	\$5,538	\$5,712	\$5,888	\$6,070	\$6,260
NSTO-OS-2060L-54-	20	60	54		3	\$5,259	\$5,478	\$5,648	\$5,823	\$6,004	\$6,191	\$6,382	\$6,579	\$6,784
NSTO-OS-2448L-54-	24	48	54		2.5	\$5,259	\$5,478	\$5,648	\$5,823	\$6,004	\$6,191	\$6,382	\$6,579	\$6,784
NSTO-OS-2460L-54-	24	60	54		3	\$5,716	\$5,954	\$6,200	\$6,392	\$6,591	\$6,795	\$7,007	\$7,222	\$7,447

Nest, Open, Privacy Cove, Display Shelves each side, Melamine Construction														
Model Number	O.A. Depth"	O.A. Width"	O.A. Height"	Weight lbs	COM Ydg	COM Grade 1	Grade 2	Grade 3	Grade 4	Grade 5	Grade 6	Grade 7	Grade 8	Grade 9
NSTO-BS2-2480T-42	24	80	42		3	\$5,578	\$5,798	\$5,966	\$6,140	\$6,383	\$6,507	\$6,699	\$6,895	\$7,099

Nest, Open, Privacy Cove, Display Shelves each side, HPL Construction														
NSTO-BS2-2480L-42	24	80	42		3	\$6,052	\$6,289	\$6,536	\$6,728	\$6,987	\$7,131	\$7,341	\$7,558	\$7,783

Set Up Charges and Upcharges for Non-Standard and Custom Finishes		
Model Number	Description	List Price
Non-Standard PVC	Upcharge, per color, per order, for non-standard PVC	\$865
Custom Finish	Upcharge for custom stain finish	\$608
Non-Standard Stain	Upcharge for non-standard stains already matched	\$268
Sprayon Finish	Upcharge, per color, per order, for Sprayon finish	\$312

Required to order:

Model # including:

- Laminate OR melamine selection
- PVC selection
- Fabric Selection