

RUBIX MOBILE STORAGE 60"W

Storage

General Specifications

Cabinet: Are constructed with 3/4" thick engineered wood sides panels, sub-tops, vertical dividers and shelves. Backs are constructed with 3/4" thick engineered wood. Cabinet finish material includes high-pressure laminate and melamine with PVC edges and wood veneer with wood edges. Worksurface tops receive a high-pressure laminate surface. Cabinets 72"H or taller do not receive a worksurface top

Frame: Steel frame is 11 gauge 1-1/4" square steel tubing. Frame assembly is attached to cabinet using wood screws. Mobile units use 75mm twin wheel locking casters that attach via threaded inserts on underside of the steel frame assembly. Freestanding steel support legs and Mobile casters use the same threaded inserts and are interchangeable. Legs are available upon request.

Features of various cabinet configurations includes:

- Concealed door hinges and a variety of pulls available.
- Full extension drawers.

Finish: Standard powder coat on all metal parts is black; other colors may be specified. See [mediatechnologies®](#) Finish and Color Guide for choices.



Cupboard Storage (CS)			
Model Number	Description	Wgt.	List Price
CS6029-18	60"W x 18"D x 29"H	241	\$2,123
CS6036-18	60"W x 18"D x 36"H	287	\$2,393
24" Depth			
CS6029-24	60"W x 24"D x 29"H	248	\$2,240
CS6036-24	60"W x 24"D x 36"H	295	\$2,487



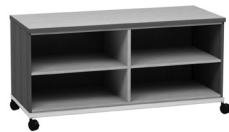
Open Storage Alternate Shelves (OSA)			
Model Number	Description	Wgt.	List Price
OSA6029-18	60"W x 18"D x 29"H		\$1,688
OSA6036-18	60"W x 18"D x 36"H	261	\$1,870
24" Depth			
OSA6029-24	60"W x 24"D x 29"H		\$1,799
OSA6036-24	60"W x 24"D x 36"H	268	\$1,964



Cupboard with Open Storage (CSOS)			
Model Number	Description	Wgt.	List Price
CSOS6029-18	60"W x 18"D x 29"H	228	\$1,984
CSOS6036-18	60"W x 18"D x 36"H		\$2,211
24" Depth			
CSOS6029-24	60"W x 24"D x 29"H	236	\$2,221
CSOS6036-24	60"W x 24"D x 36"H		\$2,442



Cupboard with Deep Box Drawer & Lateral File Storage (CSDFSL)			
Model Number	Description	Wgt.	List Price
CSDFSL6029-18	60"W x 18"D x 29"H	253	\$2,246
24" Depth			
CSDFSL6029-24	60"W x 24"D x 29"H	260	\$2,357



Open Storage (OS)			
Model Number	Description	Wgt.	List Price
OS6029-18	60"W x 18"D x 29"H		\$1,688
OS6036-18	60"W x 18"D x 36"H	261	\$1,870
24" Depth			
OS6029-24	60"W x 24"D x 29"H		\$1,799
OS6036-24	60"W x 24"D x 36"H	268	\$1,964



Cupboard with 2 Lateral File Storage Drawers (CS2FSL)			
Model Number	Description	Wgt.	List Price
CS2FSL6036-18	60"W x 18"D x 36"H	299	\$2,320
24" Depth			
CS2FSL6036-24	60"W x 24"D x 36"H	308	\$2,395

PLEASE NOTE: The prices shown are for reference only and are base models constructed of HPL work surfaces, TFL cabinets and doors with standard pulls, standard hinges and without locks. For detailed pricing please contact your local dealer or [mediatechnologies®](#).

RUBIX MOBILE STORAGE 60"W

Storage

Set Up Charges and Upcharges for Non-Standard and Custom Finishes		
Model Number	Description	List Price
Group 2 Powder Coat	Set up charge, per color, per order, for Group 2 Powder Coat	\$312
Non-Standard PVC	Upcharge, per color, per order, for non-standard PVC	\$865
Custom Finish	Upcharge for custom stain finish	\$608
Non-Standard Stain	Upcharge for non-standard stains already matched	\$268
Sprayon Finish	Upcharge, per color, per order, for Sprayon finish	\$312