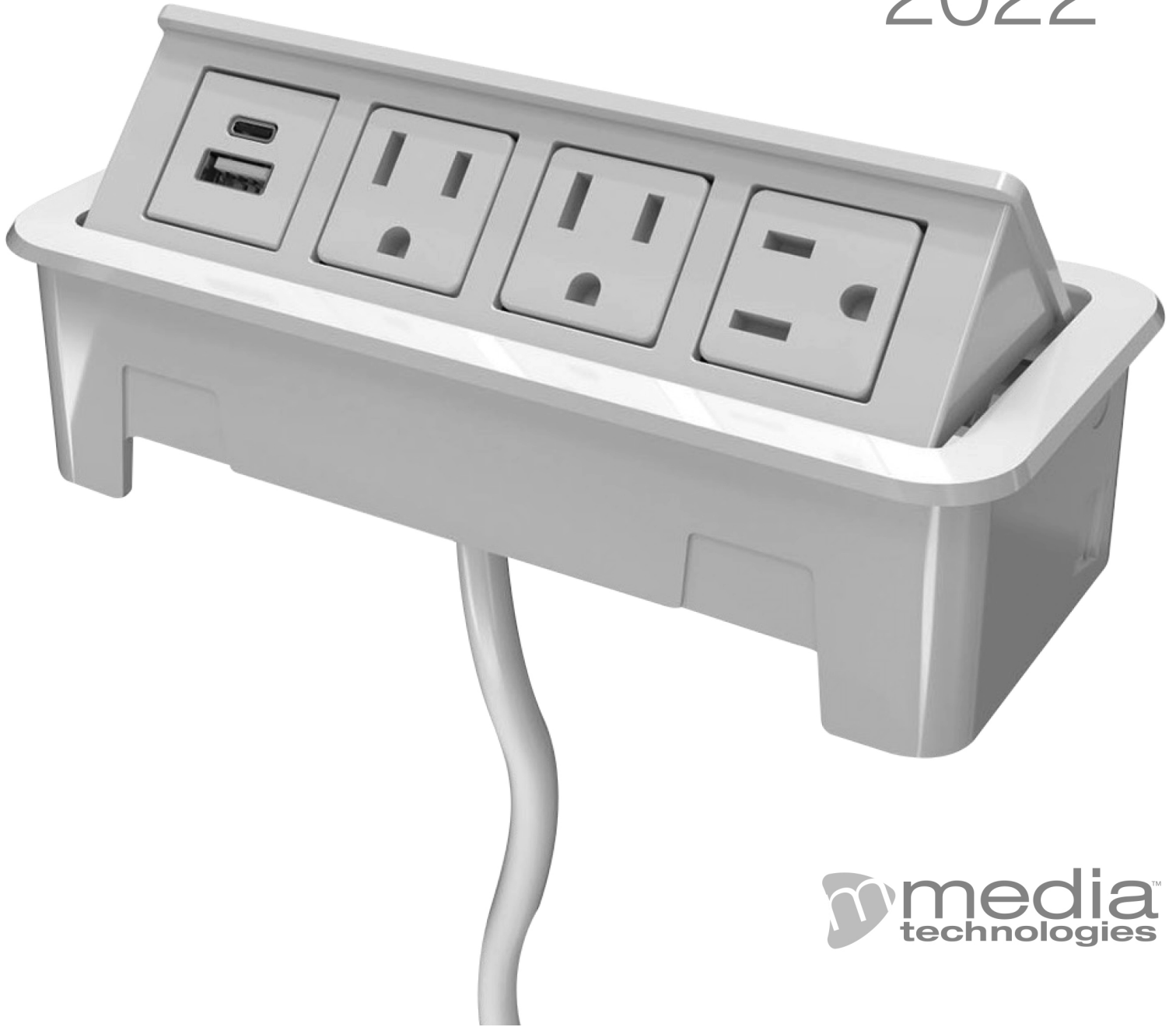




Connect 2022





Prices: All prices are F.O.B. the factory. Prices and specifications are subject to change without notice. Prices do not include applicable taxes, special handling or installation charges. Possession of a price list is not an offer to or agreement to sell. We reserve the right to change prices without notice. We are not responsible for typographical errors. In the event a price or description is found to be incorrect, the correct information will be communicated to you when the order is received.

Credit Terms: Open account status is only granted after a completed credit application is received and approved.

Payment Terms: Terms for open account are net 30 days. Terms for orders without open account will be determined by Mediatechnologies LLC on an order-by-order basis and may require prepayment or a 50% deposit with order and the balance prepaid before shipment.

Orders: Orders must be in writing. Faxed orders are acceptable. Processing of orders will not begin until a signed acknowledgement is received.

Acknowledgements: Orders are accepted, manufactured and invoiced based on written acknowledgements issued by Mediatechnologies LLC. All orders are considered correct as acknowledged. Notify Mediatechnologies LLC immediately of any order discrepancies. Acknowledged orders may not be changed or cancelled without written consent from Mediatechnologies LLC.

Changes to orders: Changes to orders already in process may be subject to a fee covering the cost to make the requested change. If a fee is necessary a written authorization of acceptance will be required. All requests for changes are subject to approval by Mediatechnologies LLC.

Cancellation of orders: All orders received by Mediatechnologies LLC are considered firm and cannot be cancelled without our approval. A cancellation fee may be required based upon cost incurred by Mediatechnologies LLC prior to receipt of a cancellation request.

Returns: Returns are not accepted without a Return Goods Authorization issued by Mediatechnologies LLC. Unauthorized returns will not be accepted. Returns may be subject to a restocking fee.

Shipping Terms: All orders will be shipped F.O.B. shipping point with freight charged collect. Shipping weights listed are net.

Routing: Shipments will be routed "best way" or as specified. Instructions will be followed as closely as possible, however, Mediatechnologies LLC reserves the right to make changes due to local conditions or other circumstances.

Freight Damage: Legal title to merchandise passes to the buyer upon acceptance by the carrier. All cartons must be carefully inspected at the time of delivery. Visible damage should be noted on the delivery receipt. In the case of concealed damage, the carrier must be notified within (5) days. It is the buyer's obligation to seek recourse against the shipper.

Shortages: Shipments should be inspected upon receipt for shortages. Shortages must be reported to Mediatechnologies LLC in writing within (5) days of receipt.

Shipping Address: mediatechnologies®
892 Industrial Park Drive
Shelby, MI 49455

Warranty: All items manufactured by Mediatechnologies LLC, home of mediatechnologies® and Benchmark™ library furniture, are guaranteed against defects for a period of five (5) years from the date of purchase.

We will repair or replace, in our discretion, any defective item without cost to our customer. This is customer's sole and exclusive remedy against us. No delay in shipment or delivery shall give rise to any liability for damages whatsoever. We are not liable for defects caused by customer or any third party. Customer is not authorized to make any repairs whatsoever or to deduct any amount from the purchase price. In no event shall our liability under this warranty exceed the purchase price. In no event shall we be liable for incidental, special or consequential damages. We disclaim all other warranties, express or implied, as to any matter whatsoever, including without limitation, quality, design, performance, specifications, samples, condition, merchantability and fitness for any particular purpose. No action may be commenced for breach of the warranty more than six months after the cause of action accrues and any such action may only be brought in the county of Oceana, State of Michigan.



POWERSPOT



-1P1UC

PowerSpot		
In surface, Round, Flush-mount, 2.5" diameter cutout required		
Model Number	Description	List Price
APSP-1P1UC-72-B	1 AC, 1 USB-A & 1 USB-C, Black, 6 ft cord	\$199
APSP-1P1UC-72-W	1 AC, 1 USB-A & 1 USB-C, White, 6 ft cord	\$199
APSP-1P1UC-72-N	1 AC, 1 USB-A & 1 USB-C, Nickel, 6 ft cord	\$199
APSP-1P1UC-120-B	1 AC, 1 USB-A & 1 USB-C, Black, 10 ft cord	\$229
APSP-1P1UC-120-W	1 AC, 1 USB-A & 1 USB-C, White, 10 ft cord	\$229
APSP-1P1UC-120-N	1 AC, 1 USB-A & 1 USB-C, Nickel, 10 ft cord	\$229

PORT



-2P



-1P2U



-1P1UC

Port		
In-surface, Round, Flush-mount (3" dia. cutout)		
Model Number	Description	List Price
APRT-2P-72-B	2 AC receptacles, 72" cord, Black finish	\$222
APRT-2P-72-W	2 AC receptacles, 72" cord, White finish	\$222
APRT-2P-72-S	3 AC receptacles, 72" cord, Silver finish	\$222
APRT-2P-120-B	2 AC receptacles, 120" cord, Black finish	\$226
APRT-2P-120-W	2 AC receptacles, 120" cord, White finish	\$226
APRT-2P-120-S	2 AC receptacles, 120" cord, Silver finish	\$226
APRT-1P2U-72-B	1 AC receptacle, Dual USB port, 72" cord, Black finish	\$274
APRT-1P2U-72-W	1 AC receptacle, Dual USB port, 72" cord, White finish	\$274
APRT-1P2U-72-S	1 AC receptacle, Dual USB port, 72" cord, Silver finish	\$274
APRT-1P2U-120-B	1 AC receptacle, Dual USB port, 120" cord, Black finish	\$373
APRT-1P2U-120-W	1 AC receptacle, Dual USB port, 120" cord, White finish	\$373
APRT-1P2U-120-S	1 AC receptacle, Dual USB port, 120" cord, Silver finish	\$373
APRT-1P1UC-72-B	1 AC receptacle, 1 USB Port & 1 USB-C Port, 72" cord, Black finish	\$274
APRT-1P1UC-72-W	1 AC receptacle, 1 USB Port & 1 USB-C Port, 72" cord, White finish	\$274
APRT-1P1UC-72-S	1 AC receptacle, 1 USB Port & 1 USB-C Port, 72" cord, Silver finish	\$274
APRT-1P1UC-120-B	1 AC receptacle, 1 USB Port & 1 USB-C Port, 120" cord, Black finish	\$373
APRT-1P1UC-120-W	1 AC receptacle, 1 USB Port & 1 USB-C Port, 120" cord, White finish	\$373
APRT-1P1UC-120-S	1 AC receptacle, 1 USB Port & 1 USB-C Port, 120" cord, Silver finish	\$373

ENSEMBLE



-2P2U



-2P1UC

Ensemble		
In-surface, rectangular panel, Flush-Mount, 2" x 5.25" cutout, rear flange mount		
Model Number	Description	List Price
AEMB-2P2U-72-B	2 AC, 2 USB-A ports, Black, 6 ft cord	\$224
AEMB-2P2U-72-W	2 AC, 2 USB-A ports, White, 6 ft cord	\$224
AEMB-2P2U-72-N	2 AC, 2 USB-A ports, Nickel, 6 ft cord	\$242
AEMB-2P2U-120-B	2 AC, 2 USB-A ports, Black, 10 ft cord	\$253
AEMB-2P2U-120-W	2 AC, 2 USB-A ports, White, 10 ft cord	\$253
AEMB-2P2U-120-N	2 AC, 2 USB-A ports, Nickel, 10 ft cord	\$274
AEMB-2P1UC-72-B	2 AC, 1 USB-A & 1 USB-C port, Black, 6 ft cord	\$255
AEMB-2P1UC-72-W	2 AC, 1 USB-A & 1 USB-C port, White, 6 ft cord	\$255
AEMB-2P1UC-72-N	2 AC, 1 USB-A & 1 USB-C port, Nickel, 6 ft cord	\$274
AEMB-2P1UC-120-B	2 AC, 1 USB-A & 1 USB-C port, Black, 10 ft cord	\$297
AEMB-2P1UC-120-W	2 AC, 1 USB-A & 1 USB-C port, White, 10 ft cord	\$297
AEMB-2P1UC-120-N	2 AC, 1 USB-A & 1 USB-C port, Nickel, 10 ft cord	\$312



AZTECH



-2P2U10



-2P2U10

Aztech

In-surface, rectangular panel, Flush-mount (2" x 6.75" cutout)

Model Number	Description	List Price
AZ-2P2U10-72-BA	2 AC receptacles, Dual USB port, 1 Open port, 72" cord, Black Plate, Silver anodized housing	\$487
AZ-2P2U10-72-W	2 AC receptacles, Dual USB port, 1 Open port, 72" cord, White Plate	\$487
AZ-2P2U10-72-S	2 AC receptacles, Dual USB port, 1 Open port, 72" cord, Silver Plate	\$487
AZ-2P2U10-120-BA	2 AC receptacles, Dual USB port, 1 Open port, 120" cord, Black Plate, Silver anodized housing	\$496
AZ-2P2U10-120-W	2 AC receptacles, Dual USB port, 1 Open port, 120" cord, White Plate	\$496
AZ-2P2U10-120-S	2 AC receptacles, Dual USB port, 1 Open port, 120" cord, Silver Plate	\$496

In-surface, rectangular panel, Upholstery-mount (2" x 6.75" cutout)

FTAZ-2P2U10-72-BA	2 AC receptacles, Dual USB port, 1 Open port, 72" cord, Black Plate, Silver anodized housing	\$498
FTAZ-2P2U10-72-W	2 AC receptacles, Dual USB port, 1 Open port, 72" cord, White Plate	\$498
FTAZ-2P2U10-72-S	2 AC receptacles, Dual USB port, 1 Open port, 72" cord, Silver Plate	\$498
FTAZ-2P2U10-120-BA	2 AC receptacles, Dual USB port, 1 Open port, 120" cord, Black Plate, Silver anodized housing	\$522
FTAZ-2P2U10-120-W	2 AC receptacles, Dual USB port, 1 Open port, 120" cord, White Plate	\$522
FTAZ-2P2U10-120-S	2 AC receptacles, Dual USB port, 1 Open port, 120" cord, Silver Plate	\$522

JOLT



-4P



-2P4U

Jolt

In-surface, Cube (3" dia. cutout)

Model Number	Description	List Price
AJLT-4P-72-B	4 AC receptacles, 72" cord, Black finish	\$347
AJLT-4P-72-W	4 AC receptacles, 72" cord, White finish	\$347
AJLT-4P-120-B	4 AC receptacles, 120" cord, Black finish	\$354
AJLT-4P-120-W	4 AC receptacles, 120" cord, White finish	\$354
AJLT-2P4U-72-B	2 AC receptacles, 2 Dual USB Ports, 72" cord, Black finish	\$512
AJLT-2P4U-72-W	2 AC receptacles, 2 Dual USB Ports, 72" cord, White finish	\$512
AJLT-2P4U-120-B	2 AC receptacles, 2 Dual USB Ports, 120" cord, Black finish	\$523
AJLT-2P4U-120-W	2 AC receptacles, 2 Dual USB Ports, 120" cord, White finish	\$523

DUET



-1P2U

Duet

In-surface, rectangular panel, Upholstery, Face-mount (2" x 3.25" cutout, 3.75" between mounting holes)

Model Number	Description	List Price
ADUF-1P2U-72-B	1 AC receptacle, Dual USB port, 72" cord, Black Plate	\$349
ADUF-1P2U-72-S	1 AC receptacle, Dual USB port, 72" cord, Silver Powdercoat Plate	\$349
ADUF-1P2U-72-W	1 AC receptacle, Dual USB port, 72" cord, White Plate	\$349
ADUF-1P2U-120-B	1 AC receptacle, Dual USB port, 120" cord, Black Plate	\$357
ADUF-1P2U-120-S	1 AC receptacle, Dual USB port, 120" cord, Silver Powdercoat Plate	\$357
ADUF-1P2U-120-W	1 AC receptacle, Dual USB port, 120" cord, White Plate	\$357

TREO



-2P1UC

Treo

In-surface, rectangular panel

Model Number	Description	List Price
TRO-2P1UC-72-B	2 AC receptacles, 1 USB Port, 1 USB-C Port, 72" cord, Black finish	\$540
TRO-2P1UC-72-ST	2 AC receptacles, 1 USB Port, 1 USB-C Port, 72" cord, Storm finish	\$540
TRO-2P1UC-120-B	2 AC receptacles, 1 USB Port, 1 USB-C Port, 120" cord, Black finish	\$550
TRO-2P1UC-120-ST	2 AC receptacles, 1 USB Port, 1 USB-C Port, 120" cord, Storm finish	\$550



The -4P models require a large plug with an integrated circuit breaker that will NOT pass through a table leg.



STANDLEY



-2P1UC/4P

Standley

On-surface desktop power center, and below-surface mount plug-in outlet center, for sit to stand tables/desks

Model Number		List Price
STND-2P1UC/4P-72-B	Standley, 2 AC, 1 USB-A, 1 USB-C above surface, 4 AC below surface, 72" coil cord, Black finish	\$810
STND-2P1UC/4P-72-W	Standley, 2 AC, 1 USB-A, 1 USB-C above surface, 4 AC below surface, 72" coil cord, White finish	\$810

BACKSTOP



-2P2U



-3P2U

Backstop

On-surface mount

Model Number	Description	List Price
ABTP-2P2U-72-B	Backstop, 2 AC, 2 USB-A ports, Black, 6ft cord	\$178
ABTP-2P2U-72-W	Backstop, 2 AC, 2 USB-A ports, White, 6ft cord	\$178
ABTP-3P2U-72-B	Backstop, 3 AC, 2 USB-A ports, Black, 6ft cord	\$247
ABTP-3P2U-72-W	Backstop, 3 AC, 2 USB-A ports, White, 6ft cord	\$247
ABTP-MTK-B	Backstop, Mounting Kit, Black	\$38
ABTP-MTK-GY	Backstop, Mounting Kit, Gray	\$38

DUAL UP



-4P4U20



-4P4U2C



-4P8U

Dual Up

In-surface, Rectangular, Dual Flip-up (7.69" x 8" cutout)

Model Number	Description	List Price
AMX-4P4U20-72-BABT	4 AC receptacles, 2 Dual USB Ports, 2 Open Ports, 72" cord, Black Anodized finish, Black Trim	\$1,249
AMX-4P4U20-72-SAWT	4 AC receptacles, 2 Dual USB Ports, 2 Open Ports, 72" cord, Silver Anodized finish, White Trim	\$1,249
AMX-4P4U20-120-BABT	4 AC receptacles, 2 Dual USB Ports, 2 Open Ports, 120" cord, Black Anodized finish, Black Trim	\$1,262
AMX-4P4U20-120-SAWT	4 AC receptacles, 2 Dual USB Ports, 2 Open Ports, 120" cord, Silver Anodized finish, White Trim	\$1,262
AMX-4P4U2C-72-BABT	4 AC receptacles, 2 Dual USB Ports, 2 USB-C Ports, 72" cord, Black Anodized finish, Black Trim	\$1,020
AMX-4P4U2C-72-SAWT	4 AC receptacles, 2 Dual USB Ports, 2 USB-C Ports, 72" cord, Silver Anodized finish, White Trim	\$1,020
AMX-4P4U2C-120-BABT	4 AC receptacles, 2 Dual USB Ports, 2 USB-C Ports, 120" cord, Black Anodized finish, Black Trim	\$1,038
AMX-4P4U2C-120-SAWT	4 AC receptacles, 2 Dual USB Ports, 2 USB-C Ports, 120" cord, Silver Anodized finish, White Trim	\$1,038
AMX-4P8U-72-BABT	4 AC receptacles, 4 Dual USB Ports, 72" cord, Black Anodized finish, Black Trim	\$1,315
AMX-4P8U-72-SAWT	4 AC receptacles, 4 Dual USB Ports, 72" cord, Silver Anodized finish, White Trim	\$1,315
AMX-4P8U-120-BABT	4 AC receptacles, 4 Dual USB Ports, 120" cord, Black Anodized finish, Black Trim	\$1,329
AMX-4P8U-120-SAWT	4 AC receptacles, 4 Dual USB Ports, 120" cord, Silver Anodized finish, White Trim	\$1,329

ENVOY



-2P2U

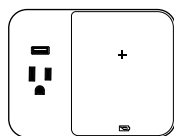
Envoy

In-surface, rectangular box with flip-up panel, Flush-mount, 4.125" x 5" cutout required

Model Number	Description	List Price
AENV-2P2U-72-B	Envoy, 1 duplex outlet, 2 USB-A ports, Black, 6 ft cord	\$607
AENV-2P2U-72-SS	Envoy, 1 duplex outlet, 2 USB-A ports, Stainless Steel, 6 ft cord	\$607



SPARKY



-1P1U1WCS

Sparky		
On-surface, rectangular flat surface, table-top grommet-cutout-mount		
Model Number	Description	List Price
SPK-1P1U1WCS-72-B	5W Qi charging surface, 1 AC receptacle, 1 USB Port, 72" cord, Black gloss plastic	\$412
SPK-1P1U1WCS-72 -W	5W Qi charging surface, 1 AC receptacle, 1 USB Port, 72" cord, White gloss plastic	\$412
SPK-1P1U1WCS-120-B	5W Qi charging surface, 1 AC receptacle, 1 USB Port, 120" cord, Black gloss plastic	\$419
SPK-1P1U1WCS-120-W	5W Qi charging surface, 1 AC receptacle, 1 USB Port, 120" cord, White gloss plastic	\$419

CHARGE UP



-3P1UC



-3P1O

Charge Up		
In-surface, Rectangular, Single Flip-up (3" x 6.9375" cutout)		
Model Number	Description	List Price
ACUS-3P1UC-72-B	3 AC receptacles, 1 USB-A, 1 USB-C, 72" cord, Black finish	\$467
ACUS-3P1UC-72-W	3 AC receptacles, 1 USB-A, 1 USB-C, 72" cord, White finish	\$467
ACUS-3P1UC-120-B	3 AC receptacles, 1 USB-A, 1 USB-C, 120" cord, Black finish	\$479
ACUS-3P1UC-120-W	3 AC receptacles, 1 USB-A, 1 USB-C, 120" cord, White finish	\$479
ACUS-3P1O-72-B	3 AC receptacles, 1 Open Port, 72" cord, Black finish	\$333
ACUS-3P1O-72-W	3 AC receptacles, 1 Open Port, 72" cord, White finish	\$333
ACUS-3P1O-120-B	3 AC receptacles, 1 Open Port, 120" cord, Black finish	\$345
ACUS-3P1O-120-W	3 AC receptacles, 1 Open Port, 120" cord, White finish	\$345

MINI CHARGE UP



-2P



-1U2C1P

Mini Charge Up		
In-surface, Rectangular, Single Flip-up (3" x 4.5" cutout)		
Model Number	Description	List Price
ACUM-2P-72-W	2 AC receptacles, 72" cord, White finish	\$277
ACUM-2P-72-B	2 AC receptacles, 72" cord, Black finish	\$277
ACUM-2P-120-W	2 AC receptacles, 120" cord, White finish	\$290
ACUM-2P-120-B	2 AC receptacles, 120" cord, Black finish	\$290
ACUM-1U2C1P-72-W	1 USB-A, 2 USB-C, 1 AC receptacle, 72" cord, White finish	\$435
ACUM-1U2C1P-72-B	1 USB-A, 2 USB-C, 1 AC receptacle, 72" cord, Black finish	\$435
ACUM-1U2C1P-120-W	1 USB-A, 2 USB-C, 1 AC receptacle, 120" cord, White finish	\$447
ACUM-1U2C1P-120-B	1 USB-A, 2 USB-C, 1 AC receptacle, 120" cord, Black finish	\$447

TRACKSTAR

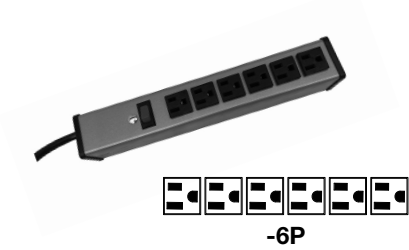


-2P

Track Star		
Model Number	Description	List Price
TSTR-2P-72-B	2 AC receptacle, 4 Data ports, Low profile ramps, wireway length 72", 108" cord	\$1,540
TSTR-2P-120-B	3 AC receptacle, 4 Data ports, Low profile ramps, wireway length 144", 180" cord.	\$2,581

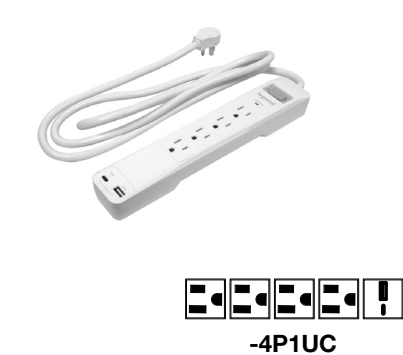


HEAVY DUTY
OUTLET CENTER



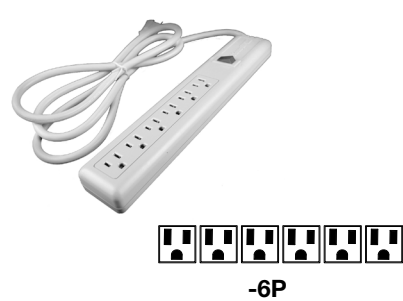
Heavy Duty Outlet Center		
Model Number	Description	List Price
HDPC-6P	6 AC receptacles, Power Distribution Strip, Switchable, 72" cord, Aluminum housing ,Silver finish	\$216

PLASTIC PLUG-IN
OUTLET CENTER



Plastic Plug-In Outlet Center		
Model Number	Description	List Price
PPOC-4P1UC	4 AC receptacles, 1 USB, 1 USB-C, Power Distribution Strip, Switchable, White plastic housing, 72" cord	\$174

P6 POWER STRIP

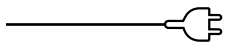


P6 Power Strip		
Model Number	Description	List Price
P6PS-6P	6 AC receptacles, Power Distribution Strip, Switchable, White Plastic Housing, 72" cord	\$59

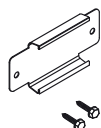
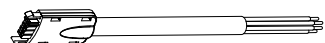
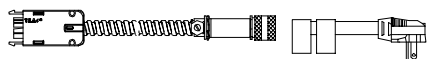
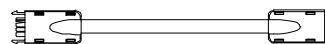
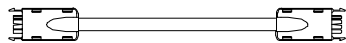
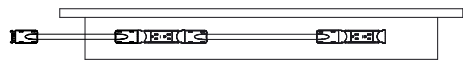
MODULINK



ModuLink		
Model Number	Description	List Price
MDS-3P1UC	3 AC receptacles, 1 USB, 1 USB-C, Single circuit modular power distribution system, Starter Unit, White plastic housing, 120" Power cord, linking cord.	\$401
MDE-3P1UC	3 AC receptacles, 1 USB, 1 USB-C, Single circuit modular power distribution system, Feed-thru extension unit,White plastic housing, 2 linking cords.	\$378
MDT-3P1UC	3 AC receptacles, 1 USB, 1 USB-C, Single circuit modular power distribution system, Terminating unit,White plastic housing, 1 linking cord.	\$330



MODTRAK 4



ModTrak4		
Model Number	Description	List Price
KITS		
MT-4T-36	Kit, for 36" Table, 2 Duplex Receptacles	\$262
MT-4T-48	Kit, for 48" Table, 2 Duplex Receptacles	\$271
MT-4T-60	Kit, for 60" Table, 2 Duplex Receptacles	\$284
MT-4T-72	Kit, for 72" Table, 2 Duplex Receptacles	\$294

M-M Jumper		
JMM-9	9" Male to Male Jumper Cable, 4-track wiring system,	\$73
JMM-12	12" Male to Male Jumper Cable, 4-track wiring system,	\$75
JMM-18	18" Male to Male Jumper Cable, 4-track wiring system,	\$79
JMM-22	22" Male to Male Jumper Cable, 4-track wiring system,	\$82
JMM-24	24" Male to Male Jumper Cable, 4-track wiring system,	\$84
JMM-30	30" Male to Male Jumper Cable, 4-track wiring system,	\$87
JMM-36	36" Male to Male Jumper Cable, 4-track wiring system,	\$92
JMM-42	42" Male to Male Jumper Cable, 4-track wiring system,	\$95
JMM-48	48" Male to Male Jumper Cable, 4-track wiring system,	\$109

M-F Jumper		
JMF-9	9" Male to Female Jumper Cable, 4-track wiring system,	\$64
JMF-12	12" Male to Female Jumper Cable, 4-track wiring system,	\$73
JMF-18	18" Male to Female Jumper Cable, 4-track wiring system,	\$77
JMF-22	22" Male to Female Jumper Cable, 4-track wiring system,	\$79
JMF-24	24" Male to Female Jumper Cable, 4-track wiring system,	\$82
JMF-30	30" Male to Female Jumper Cable, 4-track wiring system,	\$85
JMF-36	36" Male to Female Jumper Cable, 4-track wiring system,	\$92
JMF-42	42" Male to Female Jumper Cable, 4-track wiring system,	\$98
JMF-48	48" Male to Female Jumper Cable, 4-track wiring system,	\$106

Single Circuit Power Entry		
SCPE-72	Single-Circuit Power Entry, 20 AMP, 72"	\$259

2-Circuit Power Entry		
MT-4T-MLPE-72	2-Circuit Power Entry, 72"	\$157

Mounting Bracket		
MT-4C-MBK	Mounting Bracket, 4-track wiring system	\$10

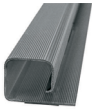


GROMMETS



Grommets		
Model Number	Description	List Price
A25GD	Grommet, Round, 50mm, Black, Installed, used for vertical applications	\$43
A25GD-W	Grommet, Round, 50mm, White, Installed, used for vertical applications	\$43
A25GDU	Grommet, Round, 50mm, Black, Uninstalled, used for vertical applications	\$16
A25GDU-W	Grommet, Round, 50mm, White, Uninstalled, used for vertical applications	\$16
A20G	Grommet, Round, 50mm, Black, Installed	\$42
A20GU	Grommet, Round, 50mm, Black, Uninstalled	\$14
A30G	Grommet, Round, 80mm, Black, Installed	\$42
A30GU	Grommet, Round, 80mm, Black, Uninstalled	\$14

CABLE CHANNEL



Cable Channel		
Model Number	Description	List Price
AWM48	Wire Management Channel, PVC, 2.5"W x 1.5"H x 48"L	\$62

CABLE GRIP



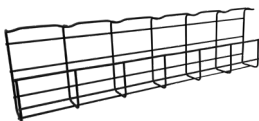
Cable Grip		
Model Number	Description	List Price
ACG-5A	Set of 2 Cable Grips, 2.5"W x 5.375"L, Aluminum Color	\$29
ACG-5B	Set of 2 Cable Grips, 2.5"W x 5.375"L, Black Color	\$29

VERTICAL CABLE MANAGEMENT



Vertical Cable Management		
Model Number	Description	List Price
AVM32-VERTB	Split Cable Loom, 4"W x 4"D x 32"H, Black finish	\$177
AVM32-VERTS	Split Cable Loom, 4"W x 4"D x 32"H, Silver finish	\$177

CORD STORAGE BASKET



Cord Storage Basket		
Model Number	Description	List Price
CSB24-B	Carbon Steel basket cable management tray, Black finish	\$132

CPU HOLDERS



CPU Holders		
Model Number	Description	List Price
ACPU-CS-10	Stationary Bracket, Adjustable CPU Holder, 5.25" - 9.25"W x 15.375" - 21"H	\$169
ACPU-CS-11	Rotating Bracket, Adjustable CPU Holder, 5.25" - 9.25"W x 15.375" - 21"H	\$209

KEYBOARD TRAY



Keyboard Tray		
Model Number	Description	List Price
AAKT003	Articulating Keyboard Mechanism with Mouse Tray, 30"W x 20"D, Adjustable Height	\$384

BAG HOOK



Bag Hook		
Model Number	Description	List Price
BPH	Metal Bag Hook	\$17



www.mediatechnologies.com

892 Industrial Park Drive
Shelby, MI 49455
P: 231.861.2194
F: 231.861.6678
www.mediatechnologies.com
sales@mediatechnologies.com

P-CONNECT-220708

PURE MICHIGAN®