

BLOX MOBILE CART

Storage

BLOX Mobile Cart

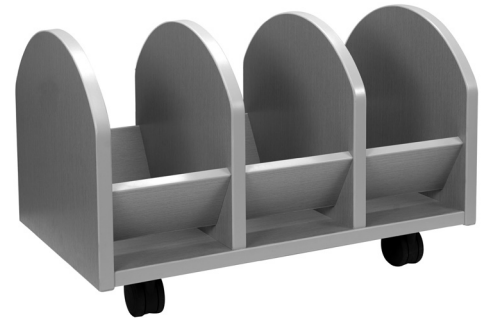
General Specifications

End panels and vertical dividers are constructed of 1" thick particle board core with either melamine or high-pressure laminate faces and 3mm PVC edge banding. Bottom panel is 1" thick melamine with 3mm PVC edgebanding. Side guide panels are 3/4" thick particle board core with melamine or high-pressure laminate faces and 3mm PVC edgebanding. 4 locking 75mm swivel casters are mounted to the base.

The BLOX Mobile Cart is designed to hold twelve (12) 2"H x 15" Diameter CBLOX cylindrical soft seats.

The BLOX 2-Tier Mobile Cart is designed to hold twelve (24) 2"H x 15" Diameter CBLOX cylindrical soft seats.

Note: BLOX cushions are not included.



BMC-3217-T-MOB

BLOX Mobile Storage Cart			
Model Number	Description	Wt.	List Price
Melamine Panels			
BMC-3217-T-MOB	BLOX Mobile Cart, 17"D x 32.5"W x 18.875"H	47	\$645
High-Pressure Laminate Panels			
BMC-3217-L-MOB	BLOX Mobile Cart, 17"D x 32.5"W x 18.875"H	47	\$992

BLOX 2-Tier Mobile Storage Cart			
Model Number	Description	Wt.	List Price
Melamine Panels			
BMC-3217-42-T-MOB	BLOX Mobile Cart, 17"D x 32.5"W x 42"H	47	\$940
High-Pressure Laminate Panels			
BMC-3217-42-L-MOB	BLOX Mobile Cart, 17"D x 32.5"W x 42"H	47	\$1,268

Required to order: Model # including options if applicable

- Melamine or High-pressure laminate selection
- PVC Selection



BMC-3217-42-L-MOB

Set Up Charges and Upcharges for Non-Standard and Custom Finishes		
Model Number	Description	List Price
Non-Standard PVC	Upcharge, per color, per order, for non-standard PVC	\$865
Custom Finish	Upcharge for custom stain finish	\$608
Non-Standard Stain	Upcharge for non-standard stains already matched	\$268
Sprayon Finish	Upcharge, per color, per order, for Sprayon finish	\$312