

General Specifications

Totes suitable for use with rails: Totes indicated as suitable for use with rails can be easily moved in and out of units that are provided with a pair of tote rails. Tote rails can accommodate a variety of tote sizes. These totes are not provided with lids. Totes are made of Polypropylene

Totes suitable for use with cubbies: Totes indicated as suitable for use with cubbies are designed to be stored on shelves. These totes are not suitable for use with tote rails. A lid is included with items in this tote category. Totes are made of Plastic

Under-table bracket : Pair of brackets with rails that allow totes that are suitable for use with rails to be mounted under a worksurface. The bracket adds a 12mm drop from the bottom surface of the worksurface to the top of the tote. Overall height of under-table tote will be tote height + 12mm (.5").



Totes			
Model Number	Description	Min Purchase Qty	List Price
Suitable for Rails			
F1TBA-75	3"H x 12.3"W x 16.8"L	8	\$29
F2TBB-150	5.9"H x 12.3"W x 16.8"L	6	\$39
Under-Table Mounting Bracket Pair			
TFP5-12	1.75"H x 1"W x 13.7"L	1	\$30
Suitable for Cubbies			
TBA-150	3.25"H x 10.75"W x 13.25"L	1	\$24
TBB-160	5.25"H x 10.75"W x 13.25"L	1	\$26
TBC-120	5.75"H x 8.25"W x 13.75"L	1	\$31
TBD-110	5.75"H x 7"W x 8.25"L	1	\$33

Available Colors

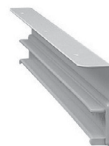
- | | | |
|--|---|---|
| <p>* Colors available:
 Tropical Orange
 Plum Purple
 Flame Red
 Sunshine Yellow
 Royal Blue
 Grass Green
 Cyan Blue
 Lime Jolly
 Translucent</p> | <p>** Colors available:
 Clear
 Red
 Yellow
 Blue
 Green
 Black
 White</p> | <p>*** Colors available:
 Clear
 Red
 Yellow
 Blue
 Green
 Black</p> |
|--|---|---|



F1TBA-75



F2TBB-150



TFP5-12
1 of 2 sides



TBA-150



TBB-160



TBC-120



TBD-110